

COMPANY PROFILE

TECHNOLOGY.
INNOVATION.
SUSTAINABILITY.



Table of contents

Introduction	01
About Us	04
Our Solutions	07
Footprint	08
IoT & Enterprise Solutions	10
Energy Analytics & Smart Cities	12
Open Framework	14
intelligent Integrated Command & Control Centre	16
Partner Program	23
Products	26
Suite of applications	28
Certifications	30
Success Stories	32
Completed Projects	36

WHO WE ARE

Netix.AI is an IoT & AI based automation solution provider, leverages its innovative strategies, analytic algorithms and brand agnostic solutions to transform your facilities into safe and sustainable edifices.

NETIX.AI

AI & MACHINE
LEARNINGHIGH-LEVEL
ANALYTICSCENTRALIZED
INTEGRATIONMAN-POWER
OPTIMIZATIONENERGY
SAVINGSPREDICTIVE
MAINTENANCE

61%

16%

NETIX.AI is the pioneer in digital transformation of Assets, Space and Energy management and specialist for Smart Cities, Smart Districts, Smart buildings, & Smart infrastructure.

Headquartered in the Netherland and with offices worldwide, NETIX.AI is instrumental in providing turnkey solutions for specialized solutions and connected buildings. The company has a diverse and vast portfolio of products and services based on technologies, such as Automation, AI, IoT, life safety and more. We create seamlessly connected technologies that reshape industries, transform cities and enrich lives.

Our connected devices and software enable better, faster, and more reliable management of spaces, reducing energy consumption and costs up to 25% and ensuring that you control up to 80% of the building's energy consumption. We focus on using technology to provide solutions for our customers which has kept us updated with the technological demands and create synergies that shape the digital transformation.

Armed with immense market knowledge of OT/IT sectors and skill in design and built solutions, we would be happy to assist with any opportunities that can transform your environment into a smart and sustainable one.

NETIX.AI Netherlands

Beechavenue 115,
1119RB Schiphol-Rijk,
The Netherlands

Tel. : +31 32 8 81 5 587

www.netix.ai

About Us

NETIX.AI is leading the digital transformation of energy management and automation in homes, buildings, data centers, infrastructure development and various industries. We create seamlessly connected technologies that reshape industries, transform cities and enrich lives. Our connected devices and software enable better, faster, and more reliable management of buildings, reducing energy consumption and costs up to **25%** and ensuring that you control up to **80%** of the building's energy consumption.

We are led by local talent and management expertise within the markets we serve, supported by continuous development and training, so that we can be closer to the technological demands of our customers. We are the benchmark in multiple markets and we are leading the change in energy management and automation developments.

Vision

Our goal is to enable our customers to operate a connected network of devices with centralised monitoring and control, data analytics and intelligence, through the combination of hardware, software and services.

Mission

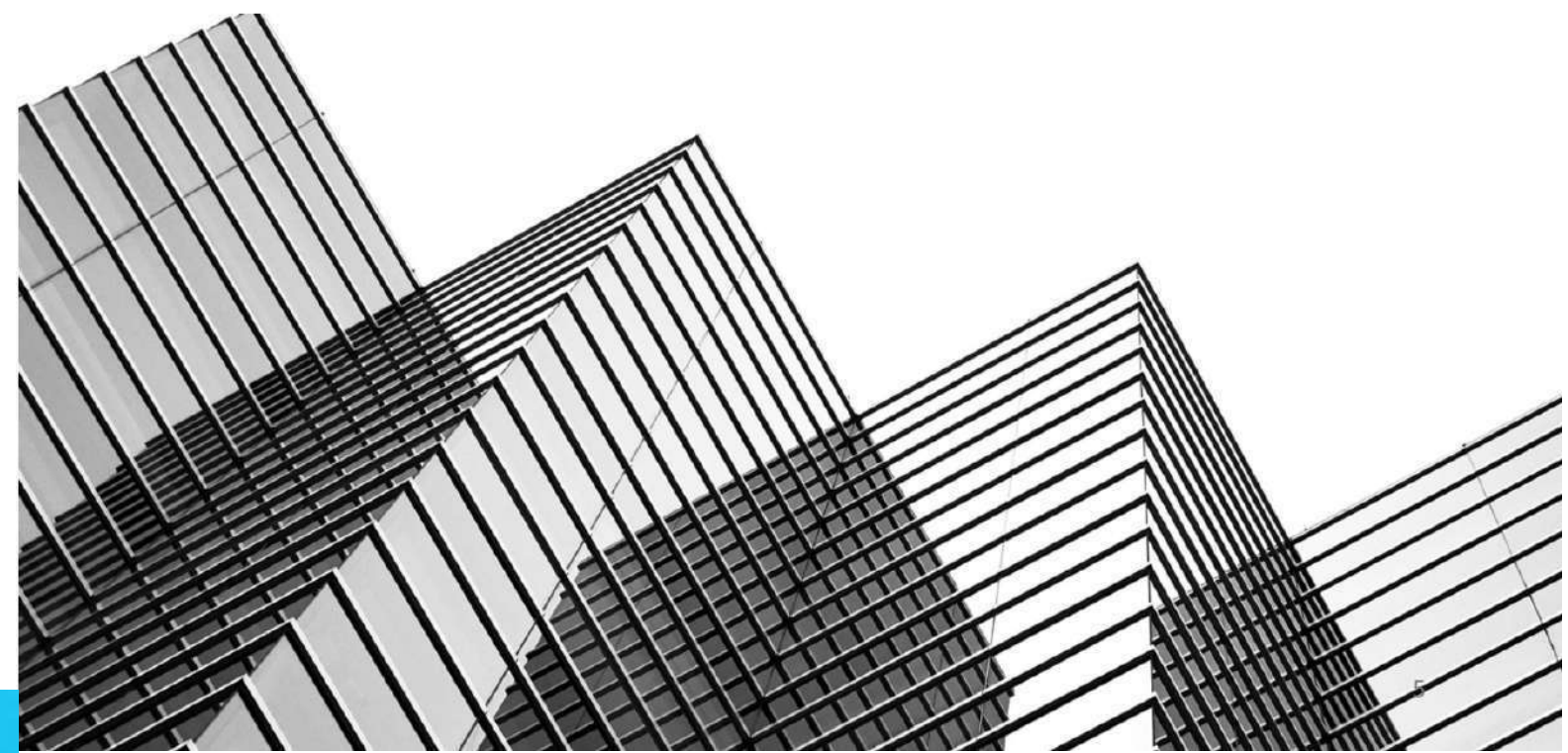
Our mission is to provide the smartest and most efficient solution to building automation and facility management through remote connectivity, seamless integration and future-ready technology.

Strategy

NETIX.AI is committed to providing bespoke and world-class energy control solutions for residential, commercial, industrial and infrastructure development applications. With a choice of easy-to-operate technologies, NETIX.AI delivers a suite of integrated products that offer the highest levels of functionality.

Development

NETIX.AI makes these possibilities a reality by creating network of powerful yet intuitively simple products, which empower people, businesses and cities, both now and into the future. The goal is to create a world which is connected and powered by the internet of Things: a place where more innovation and data are generated by the people than ever before.



CREATING TODAY A BETTER TOMORROW!

NETIX.AI

INNOVATION AND SUSTAINABILITY

OUR SOLUTIONS



➤ **IoT and AI Solutions for Buildings & Factories**

➤ **NETIX.AI Cube**

- Facilities AI
- Energy AI
- Sustainability AI
- CAFM AI

➤ **Intelligent Integrated Command Control Center**

- Asset Management
- Energy Management
- Property Management & ESG Reporting
- Facility Management

➤ **Leading the BMS Transformation - Legacy System Upgrades**

➤ **Smart Cities - Connected Buildings & Remote Management**

➤ **iIBMS - Intelligent Integrated Building Management System**

➤ **NETIX.AI Sustainability Financed Solutions**

- **Smart Hardware solutions:**
- Smart Thermostats & IAQ Sensors
 - Smart Meters
 - Gateways
 - iIBMS Controllers



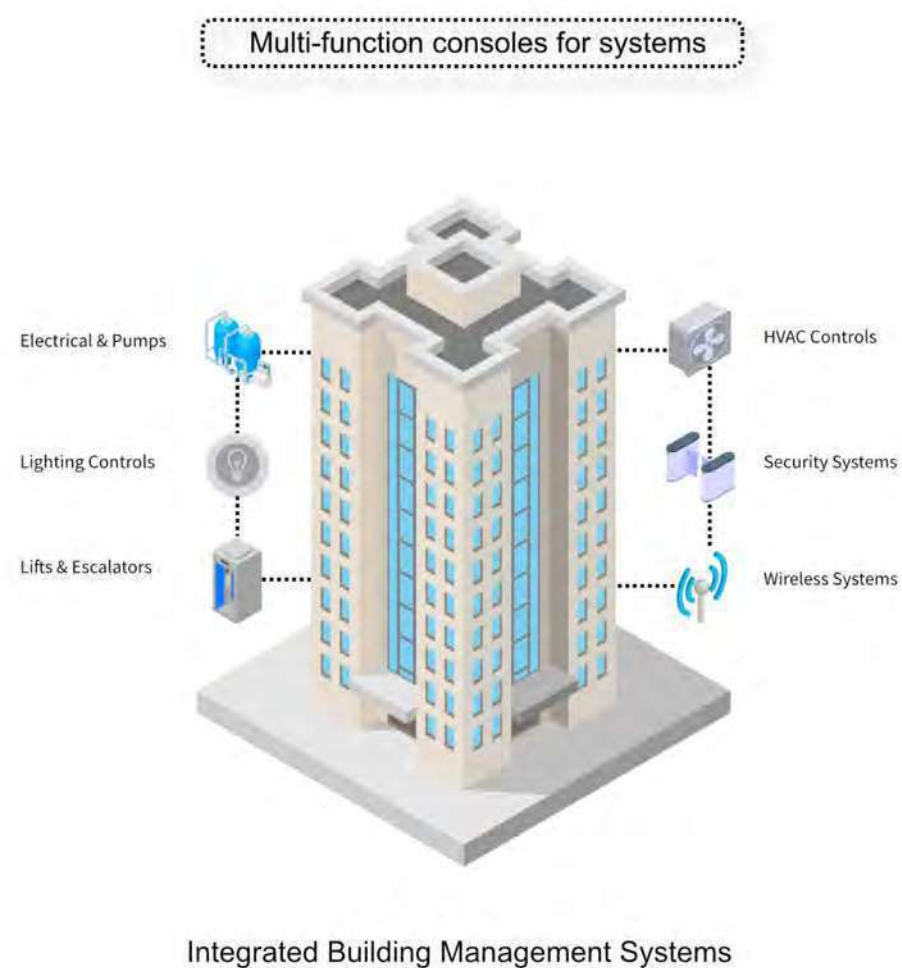
OUR GLOBAL PRESENCE

DELIVERING SOLUTIONS ACROSS THE WORLD



Solutions

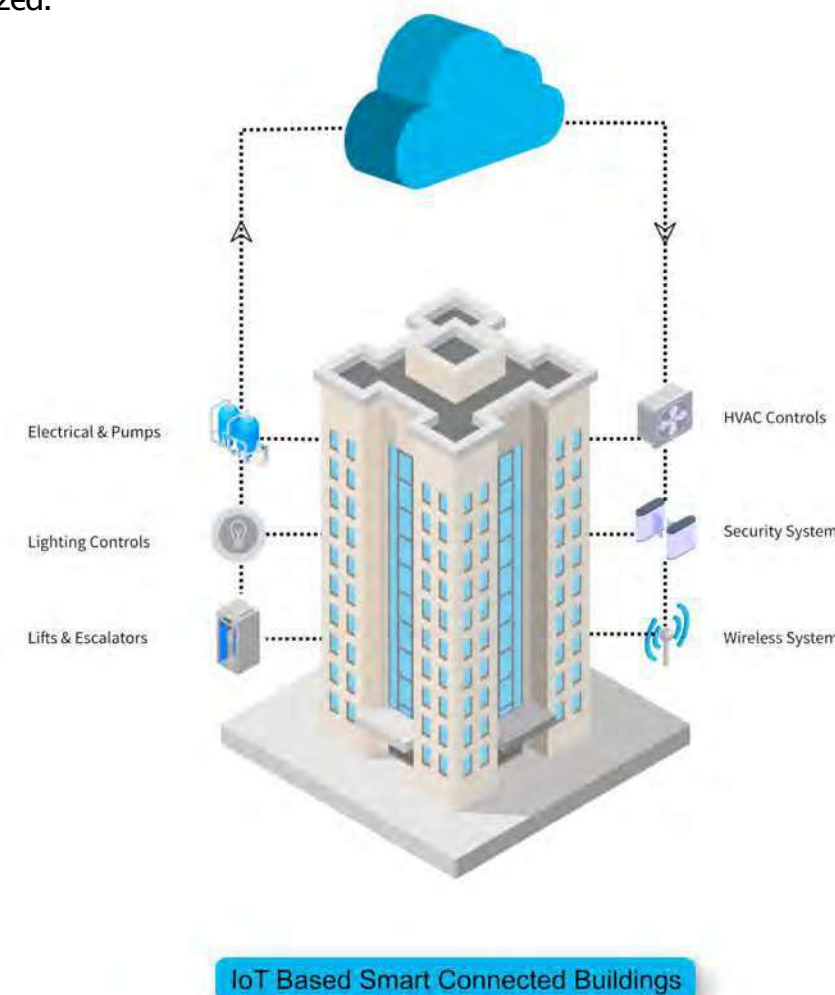
We are determined to be the platform which makes integrated automation technology work better, more efficiently and smarter, and we do so by providing solutions that focus on making the lives of building occupants easier, better and safer. We help you make insightful operational decisions through real-time data gathering, trend analysis and forecasting along with lowering operating costs and reducing downtime while improving productivity.



NETIX.AI solutions are in line with the evolving smart city concept, globally. With the help of IoT, we can improve energy distribution, integrate and streamline trash collection, reduce traffic congestion, improve air quality and aid security monitoring, to name a few.

Connected Buildings

NETIX.AI leverages the latest technological advances in IoT, AI and deep learning algorithms, in order to provide smart, connected building solutions. NETIX.AI embodies an aggregation of concept, design and implementation of building automation services, resulting in an intelligent and integrated building management solution platform that transforms buildings into high-performing assets. With seamless integration of data, gathered by IoT, the underlying infrastructure layer of buildings and cities can be easily managed and efficiently optimized.



iCCC is an integrated system which operates and manages multiple buildings/city-wide service operations and it includes real-time monitoring, optimizing and improving the efficiency of services. It transcends the expectations of a building's capability by enabling entities to connect, monitor and administer multiple utilities through a cloud-based service.

Energy Analytics

For many organizations, irrespective of their size, energy consumption is one of the highest costs among operational overheads. Metering energy use becomes critical to optimizing operational costs. A smart meter is an intelligent, digital device which measures the exact energy usage in near real-time, enabling users to actively manage and reduce their energy consumption. They measure water and energy use and send an automatic meter reading to the energy provider, ensuring that customers receive accurate bills.

“Accurate readings mean accurate billing”



Tenant Billing Solution
Integrated Billing Module

NETIX.AI



Uniview Integrated Billing Module is a user-friendly application with intuitive and flexible features which enables users to easily monitor tenant utility usage and generate invoices. The application serves as both a monitoring and an invoice generating tool, allowing invoices to be manually or automatically generated for a variety of utility usage patterns.

Smart Cities

A NETIX.AI smart city represents the digitalization of establishments, connectivity, infrastructure, facilities and other elements that make up a habitat. It is also the groundwork for an upgraded sustainable solution towards achieving a prosperous, inclusive, cost-effective, efficient and healthier city. Netix.ai is equipped to curate and support this future at every step of the process. From conceptualization and designing to execution and detailed actionable insights –we do it all.



BUILD A SMART CITY WITHOUT STARTING FROM SCRATCH!

Managed Services

Managed services refer to the outsourcing of in-house functions to third-party service providers. At the most basic level, a managed service provider (MSP) monitors and maintains customer assets on a regular basis. The ever-changing business environment and the increase in regulatory requirements have made it critical for building owners and facility managers to choose a team of experts who can successfully manage building systems.

Open Framework

Niagara Framework leads the world in the business application advances of truly open environments which harness the power of the internet. NETIX.AI brings to you an open Application Programming Interface, featuring a versatile rich supervisory software, built on the Niagara Framework.

Unview Supra, the NETIX.AI solution features a truly open environment, connecting diverse devices and systems in ways never possible before. Unview Supra enables the end user to connect devices while visualizing and analyzing data from any protocol or platform.

The Software Platform

NETIX.AI Software platform delivers sophisticated yet simple and scalable integration using the latest technology and cloud based approach in order to make the operations more efficient and the facilities more secure.

Superior User Experience

It is all about service levels and ease of use. NETIX.AI brings you the full benefits of flexible integration, superior user experience and IoT driven services.

Integrated Systems

The NETIX.AI Software Platform integrates all technical systems in the building, in order to create a unified view for all users. Supporting most of the commonly used protocols, NETIX.AI brings together BMS, GRMS security and all other building systems.

NETIX.AI Unview Supra goes beyond the limits of a legacy system, creating open protocols which make systems integration a seamless operation.

14

Key Features of Unview Supra–Supervisory Software:

- Modern UX framework and design language (HTML5)
- Customizable dashboards
- Advanced charting and visualization
- Data tagging
- Tag based navigation
- Device templating
- Data cleaning capabilities
- Niagara Station Search
- Workbench/workflow improvements
- Role based access control
- Pluggable authentication schemes
- Improved UI developer experience
- Station templating

Key Features of Unview Neo–Integration Controller :

- Powerful Niagara4 hardware platform with easy software upgrading capabilities
- Modular hardware design
- Tool-less installation, fast and easy
- Expandable, with up to four modules option
- Wi-Fi capability
- 24VAC/DC standard global power supply
- Standard open drivers included
- Easy to select the right capacity license
- Intuitive user interface
- Rich choice of colors, material and finishes

powered by
niagara
 framework®



Energy Management Platform - intelligent Integrated Command and Control Center (iICCC)

Integrated Intelligent Building Management Systems (iIBMS) are software-based platforms that monitor and control a building's mechanical and electrical equipment, increase a building's efficiency and cut energy usage. This allows building managers to respond quickly as energy demand changes.

The majority of BMS systems significantly under-perform and this results in a massive waste of energy, increased costs and uncomfortable environments for building users. A properly functioning BMS should deliver energy efficiency savings in the order of 15-30% yet studies show that most of them are wasting 15-50%. Improving the operation of your building management system is probably the single most cost-effective energy efficiency measure you can take.

Live data management helps in managing the building efficiently. What NETIX.AI is offering is much more than, just remote data management. We take energy management to a whole different level and make it work in your favor. By assigning values, actionable intelligence, IoT and AI capabilities, we enable you to drive both energy and cost savings, take actions in real-time and adapt measures and control on every user level.

Energy efficiency isn't the alternative,
it's the main choice!



By using NETIX.AI iIBMS you have access to our Energy Management Platform which reports and monitors energy systems usage in your facilities, saving you money on energy costs, intercept equipment failure and reduce downtime by 6%.

Our Platform offers solutions which include: real-time energy usage monitoring, energy data analytics, HVAC systems control, carbon and sustainability reporting. We offer you a unique software which contains tools that alter energy usage in order to promote more efficient consumption and reduce carbon emissions.

NETIX.AI's iIBMS provides valuable data and reporting to better control heating, cooling, ventilating and illuminating. Our system utilizes software that integrates with controllers and monitors the energy used to illuminate, heat, cool and ventilate your building, ultimately resulting in more efficient planning of energy use over time and reduced costs.



Energy Management Platform - intelligent Integrated Command and Control Center (ICCC)

Benefits of using NETIX.AI iBMS:

- ▶ Energy cost saving up to 28%.

Our iBMS uses powerful diagnostic tools and energy information which can be used to limit and measure energy wastage.

Control your building's energy consumption up to 84%

- ▶ You can now control as much as 84% of your building's energy consumption.

Not only are you increasing your bottom line, you are contributing towards meeting carbon targets as well. NETIX.AI's iBMS monitors usage patterns and demand so you use less energy during high peak periods. This monitoring and control process not only protects the planet but it also reduces cost significantly and it improves well-being and productivity.

- ▶ iBMS adapts energy usage to your organization's needs.

The building management system receives and communicates different levels of alarm conditions, allowing you to quickly track and respond. This results in lower building operating costs and occupancy comfort which lead to improved employee productivity and well-being while you capitalize on brand enhancement.



- ▶ We enable you to promote a circular economy.

A circular economy is an alternative to traditional linear economy, based on "make-use-dispose" in which we keep resources in use for as long as possible, extract the maximum value from them whilst in use, then recover and regenerate products and materials at the end of each service life. By using NETIX.AI iBMS you prolong the life expectancy of your HVAC equipment by constantly monitoring and maintaining parameters and settings which allow pumps to rest when possible. Moreover, should you require changes in your BMS, we can re-use the existing products, where possible, reducing waste to landfill.

- ▶ Automation saves you time

You may want your BMS to do more than just control HVAC equipment. Here is where NETIX.AI comes in, integrating third party systems or products, window/lighting controls, fire or access controls. This saves you time and money.

- ▶ Meeting Social and Corporate Responsibility Targets

We provide you with reports and visuals on how energy usage and carbon emissions are being reduced, helping you meet legislative, social and corporate responsibility requirements.



YOU HAVE THE POWER TO CONSERVE!



Deliverables



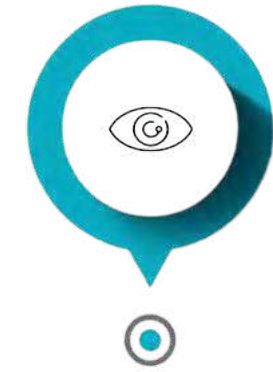
Energy Report

Automated energy audit and insights, simplifying energy reporting, reducing expenses & measuring performance



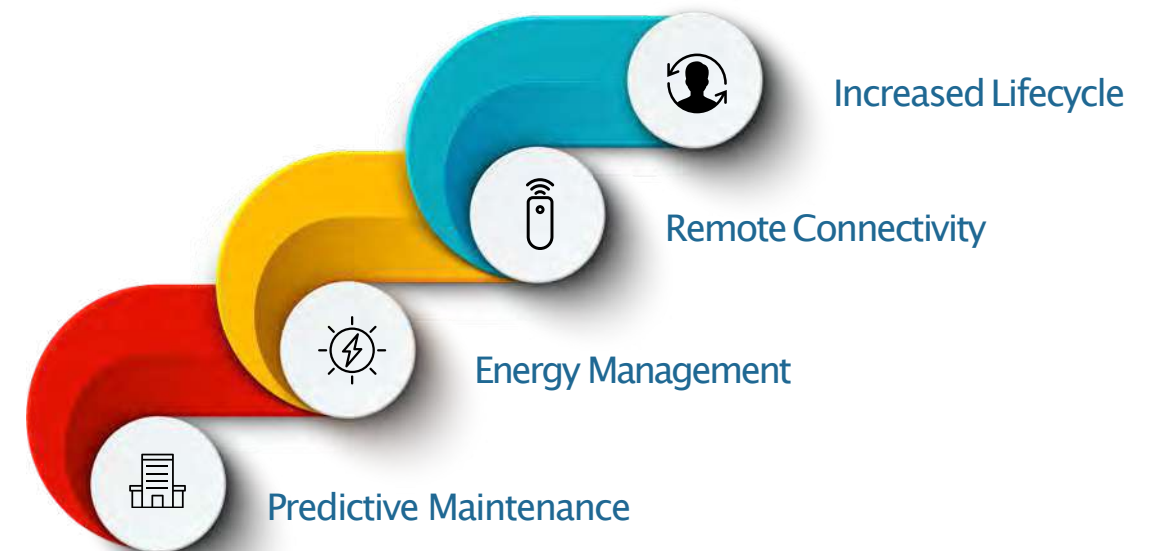
Root Cause Analytics

Automated root cause analysis of problems in order to identify appropriate solutions



Visualization

Custom business intelligence tool, making data accessible & generating custom reports.





NETIX.AI Partner Program

A revolutionary solution to building automation

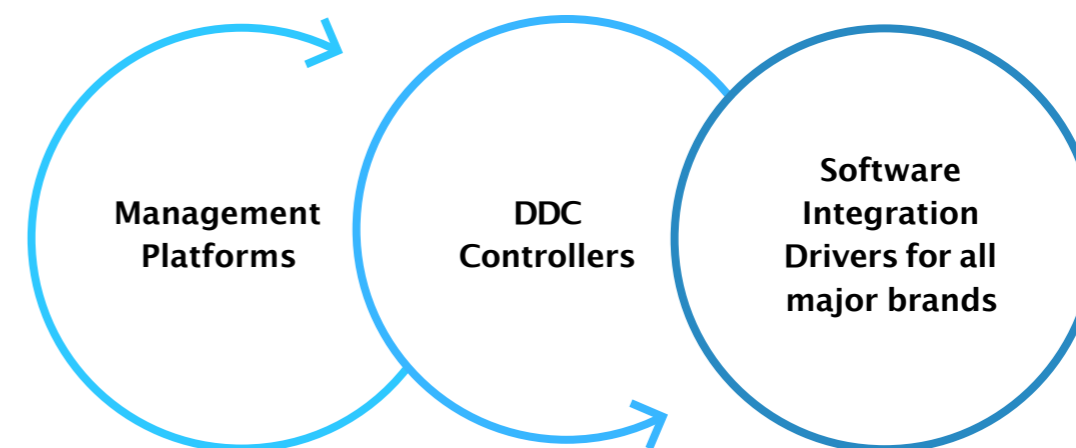
NETIX.AI is leading the digital transformation of energy management and automation in homes, buildings, data centers, infrastructure development and various industries. We create seamlessly connected technologies that reshape industries, transform cities and enrich lives.

We, at NETIX.AI, always strive to be one step ahead, and making your lives better and easier is at the core of everything we do. For this reason, we have created the [NETIX.AI Partner Program, aimed to organize the unorganized market!](#)

NETIX.AI Partner Program is an innovative and futuristic solution, meant to drive the Brownfield Revolution with unique, open protocol solutions which can integrate multi-vendor subsystems, enable real-time monitoring, conduct preventive maintenance, and create an open-protocol ecosystem in buildings, in order to ensure utmost adherence to sustainability targets.

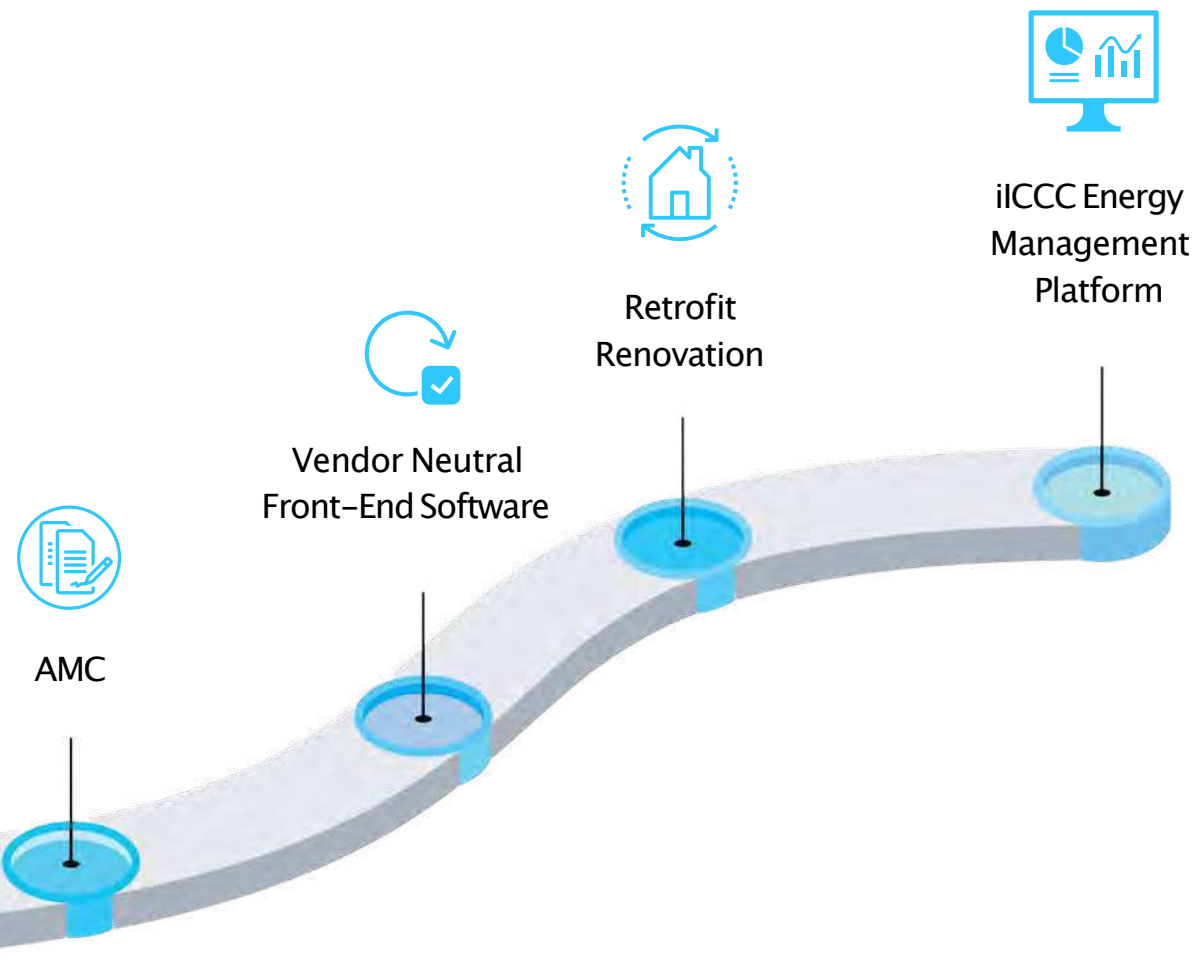
As an OEM provider and solutions enabler, our route to market has always been through certified partners. The partnership model for NETIX.AI Program entails an extremely focused and dedicated strategy, tailored for your needs and catered to your unique portfolio.

We cover, in-house, the three main verticals which you require, qualifying us as a one-stop solutions provider:



The
**Brownfield
Revolution.**

Revenue Streams



DON'T OPTIMIZE FOR CONVERSIONS, OPTIMIZE FOR REVENUE





powered by
niagara
framework®

Latest Niagara 4 Framework®

The licensing model for the NCUNIVIEW-NEO controller is simplified and features standard drivers along with optional IO and field bus expansion modules for ultimate flexibility and expandability.



IoT controllers



Thermostats



Meters



Product Description

The NX3 IoT Controller and Gateway was created with smart buildings in mind. The built-in LTE Cat M1/NB1 modem, with a high-power chipset, ensures better indoor coverage compared to traditional 2G/3G/4G modems and allows to connect devices located deep inside buildings. It supports wired Modbus/M-bus electricity, gas, water or calorie meters and wireless sensors like LoRa, Wirepas, Zigbee, etc., which need to send data to a Cloud platform.

With the NX3 IoT Controller and Gateway it is easy to create the required data flow or to perform edge processing on the data, before it is sent to the Cloud. Data reduction, through edge processing, is vital in case of low bandwidth protocols such as CAT-M or NB-IoT, in order to improve performance and reduce connectivity cost. It also supports BACnet, KNX, SNMP, MQTT, SMS, and email.

Suite of Applications

1

Building Performance Management

- Generating meaningful insights
- Optimizing energy use
- District level KPI monitoring and reporting
- Statistical energy savings analysis considering weather and occupational patterns
- Data-driven automation and control strategy

2

Remote Enterprise BMS

- Configurable centralized platform for BMS
- Extensive integration capability, seamlessly connecting any system irrespective of the type, make or protocol
- Interactive and real-time data representations

3

Fault Diagnostics & Analytics

- Centralized systems can preempt anomalies to ensure smooth facility management operations
- Remote access to insights from AI-powered analytics
- Improved life cycle and efficiency of assets

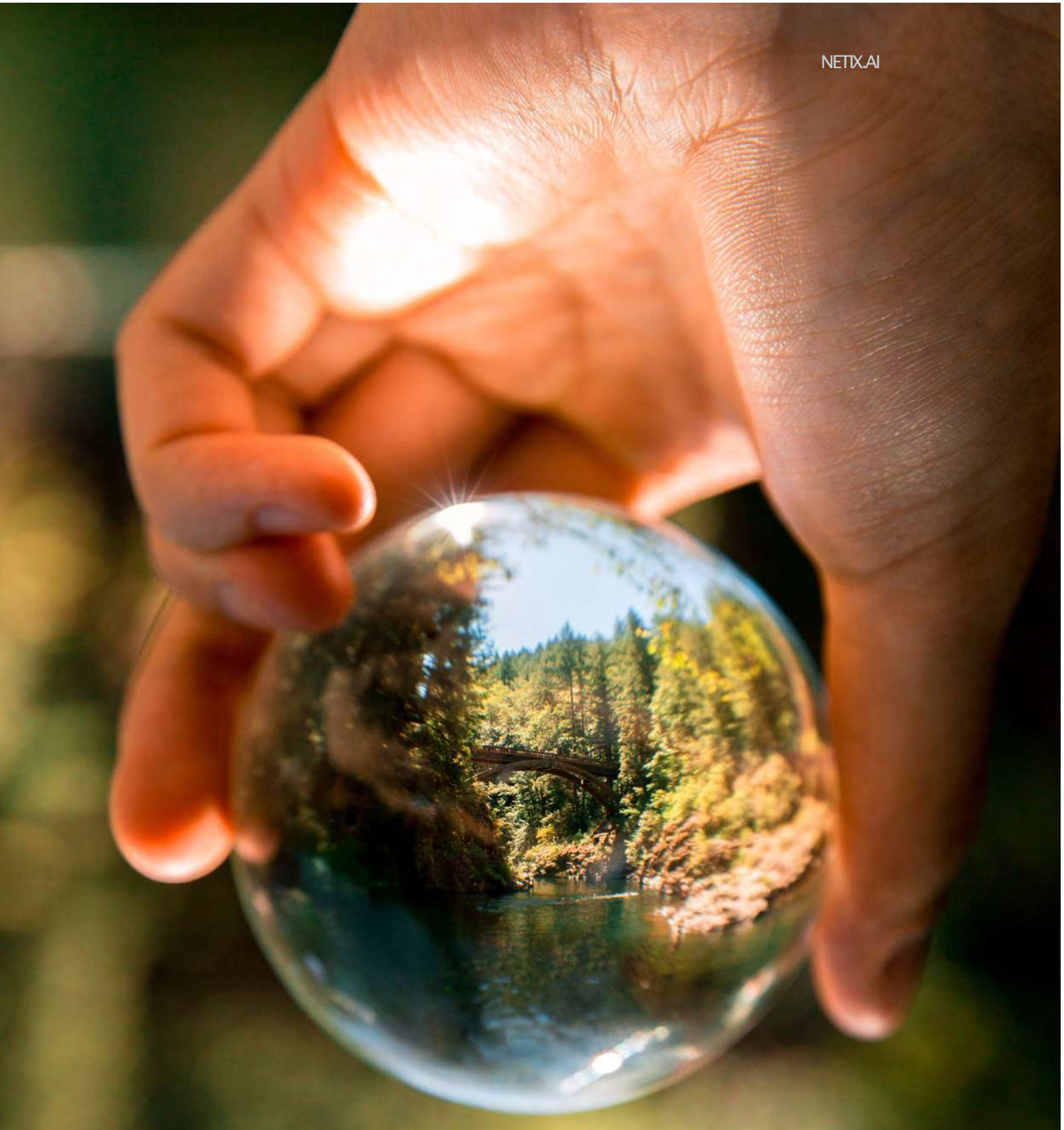
4

Facility & Property Management

- Streamline CAFM suite
- Work force optimization and management
- Executive dashboards
- Automate and configure operational process from tenant billing, parking management and many more



Certifications



"People 'over-produce' pollution because they are not paying for the costs of dealing with it."

- HaJoon Chang

We, at NETIX.AI, are committed to do our part in achieving environmental stability, by promoting sustainability in all our operations and by sharing our innovative yet environment-sensitive solutions and expertise.

Success Stories



EMAAR

Successfully managed the preventive maintenance of the BMS across multiple properties from EMAAR portfolio. EMAAR – Esteemed developers responsible for the majestic, world renowned, Burj Khalifa and Dubai Mall.

- ▶ Optimized operations and enhanced the performance output of BMS & ETS across 25,000+ Commercial and Residential units & 20,000 VillaS translating into 1,000,000+ assets, 10 Malls & 9 FIVE Star Hotels
- ▶ The platform currently hosts 40K equipments, 300K data points and from 160+ buildings and counting, 150 swimming pools, and 60+remote utilities pumping stations.
- ▶ Seamless integration and maintenance of 5 different brands of BMS
[Honeywell](#) | [Siemens](#) | [Trend](#) | [Johnson Controls](#) | [Schneider](#)
 and lighting control systems ensuring achievement of industry leading energy saving milestones.
- ▶ Improved life cycle of the DDC controllers and field peripherals, helping in reducing downtimes of the BMS.

DAMAC

Before starting the project, multiple towers had their BMS systems offline. We have successfully managed to bring the systems back, online, with minimal cost impact to the client. This enabled DAMAC to save a considerable amount on the energy bills of these properties.

- ▶ Optimized operations and preventive maintenance for 30 buildings
- ▶ Performed maintenance for 7 different brands of BMS, resulting in streamlined and centralized asset management
[Honeywell](#) | [Alerton](#) | [Siemens](#) | [Sauter](#) | [Saia Burgess](#) | [Schneider](#) | [Centraline](#)
- ▶ Improved the life cycle of fixed assets

Success Stories



- Maintenance of lighting control, BMS and multiple general assets of 3 towers
- Integration of all systems and assets onto the AI-powered intelligent Integrated Command and Control Centre
- Monitoring energy and water consumption
- Improved life cycle of fixed assets
- Optimized operations

Upgrade and maintenance of 3 Mazaya Towers' buildings, where the client saved 75% of their costs since they didn't have to replace the complete system, by upgrading to NETIX.AI Solutions instead.

- Integration of all the systems and assets of three towers onto the AI-powered intelligent Integrated Command and Control Centre; maintenance of the same
- Achieved proactive, organized and systematic management of energy use in all three towers.
- Transformed facilities into smart connected building system.

Completed Projects



Esteemed National Bank -11 branches, Abu Dhabi



Mazaya Business Avenue, Dubai, UAE



City Walk, Dubai, UAE



Al Jaddaf Residence, Dubai, UAE



Tadawul Tower, Riyadh, KSA



Emirates Airlines Staff Accommodation, Dubai, UAE



DWC Headquarter Building, Dubai, UAE



Apple Headquarters, India



Darwish Tower, Doha, Qatar



Mirdiff City Centre, Dubai, UAE



93 Al Wasl buildings, Dubai, UAE



Etisalat Digital 77 buildings, Dubai, UAE

Completed Projects



Vida Manzil Hotel, Dubai, UAE



Karolinska Research Institute, Sweden



Deutsche Bank, Jaipur, India



Sala Rakennuttajat HO, Helsinki, Finland



HDFC Bank, Hyderabad, India



JLL Office, Mumbai, India



Qatar Metro, Phase 1, Doha, Qatar



Darwish Tower, West Bay, Doha, Qatar



Water-front Commercial Building, Muscat, Oman



Meredith India, Bangalore, India



Jumbo Shopping Mall, Vantaa, Finland



Karolinska Research Institute, Stockholm, Sweden

References

Mosque at Mohd. Bin Zayed City, Abu Dhabi, UAE
 NAFFCO Labor Accommodation, Dubai, UAE
 B+G+4+R Residential Building, Dubai, UAE
 B+G+3+H Residential Building, Dubai, UAE
 Al Yousuf Residential Tower, Dubai, UAE
 Yasmin Tower, Ajman, UAE
 G+1 Rashidiya Building, Dubai, UAE
 Sharjah Co-operative Building, Muhaiah, UAE
 Asem Bin Thabit Secondary School, Fujairah, UAE
 Atika School, Khor Fakkan, UAE
 Al Naqi Centre -2B+G+M+5F-Mixed-Use Building, Lusail, Qatar
 Al Fursan Residential Buildings -D21,D49& A29,Lusail, Qatar
 Al Jazeera Networks Building -Doha, Qatar
 Water-front Commercial Building, Muscat, Oman
 Farzi Cafe, Muscat, Oman

Department of Justice. Helsinki. Finland
 Court House -City of Vantaa. Finland
 Technopolis Technology Center. Finland
 Jumbo Shopping Mall. Vantaa. Finland
 Senate Properties HO, Helsinki, Finland
 Sundsber Intelligent Residences. Finland
 Kaskisaari Intelligent Residences, Finland
 Civil Defense Center, Turku. Finland
 Jarfalla Kommun School Complex, Stockholm, Sweden
 Klaipedos Refrigerator Terminal. Lithuania
 Avilon Plaza, Moscow. Russia
 Kolomenskaya Museum. Moscow, Russia
 Krasnaya Rosza Business Center. Moscow, Russia

FMC-Cheminova, BKC Mumbai, India
 Sterlite Technical Office, Mumbai, India
 HDFC Bank, Hyderabad, India
 HDFC Bank, Vikhroli, Mumbai, India
 Deutsche Bank, Jaipur, India
 Alembic Pharmaceuticals, Gujarat, India
 Farbe Firma Pharmaceuticals, Gujarat, India
 Alkem Pharmaceuticals, Gujarat, India
 Amneal Pharmaceuticals, Gujarat, India
 Axis Center, Pune, India
 Janaseva Bank, Pune, India
 Global Logic, Bangalore, India

First Abu Dhabi Bank, Abu Dhabi, UAE
 Mazaya Business Avenue, Dubai, UAE
 Tadawul Tower, Riyadh, KSA
 Emirates Airlines Staff Accommodation, Dubai, UAE
 Darwish Tower, Doha, Qatar
 Mirdif City centre, Dubai, UAE
 City Walk, Dubai, UAE
 Al Jaddaf Residence, Dubai, UAE
 DWC Headquarter Building, Dubai, UAE
 Masdar City, Abu Dhabi, UAE
 93 Al Wasl buildings, Dubai, UAE
 Etisalat Digital 77 buildings, Dubai, UAE
 Vida Manzil Hotel, Dubai, UAE
 Karolinska Research Institute, Sweden
 Msheireb Downtown, Doha, Qatar

DAMAC



MERAAS



HDFC BANK



JLL



References



The Boeing Company
 The State of Missouri
 US Department of Agriculture (USDA)
 Missouri National Guard
 New York Power Authority (NYPA)
 United Nations World Food Program
 Nestle Purina
 City of Kansas City
 St. Louis Cooperating School District
 Salvation Army
 SSM Healthcare – St. Louis (via M360)
 Metropolitan Airports Commission
 Under Contract for Memorial Medical Center
 Sites & HSHS Medical Group Site
 Momenive
 Landratsamt Boblingen
 STATDWERKE NÖRDLINGEN
 Tarkett
 Basf
 Otto Group
 The Grand Amsterdam Sofitel Demuere – The Netherlands
 Sheraton Manhattan Hotel – US
 Intercontinental Buckhead – US
 Golden Nugget Hotel & Casino – US

Autostadt Gmbg
 The Ritz–Carlton
 Diverse Power
 Anna–Siemens–Schule
 Khg Kerntechnische Hilfsdienst Gmbh
 Roche In Mannheim
 Total Bitumen In Brinsbittel
 Osce Ministerial Council Meeting
 German Army – Special Force Command
 Royal Netherlands Army
 German Federal Office For The Protection of The Constitution
 Regulatory Agency in Berlin Mitte
 National Police Service of Greece,
 Eyeonix
 Desfa: National Natural Gas System
 Operator S.A, Eyeonix
 Public Transport In Münster
 Public Transport In Koblenz
 Regiobus Hannover Gmbh
 MacDill Air Force Base – US
 Riga International Airport – US
 Changi International Airport – SINGAPORE
 Chiang Kai–Shek International Airport – TAIWAN
 Dubai International Airport – U.A.E
 Oakland International Airport – US
 Burlington International Airport – US
 Richmond International Airport – US

Naval Station Pearl Harbor – US
 Singapore Power Grid Peng Nguan Substation – Singapore
 Fort Benning – US
 Üstra Hannoversche
 Verkehrsbetriebe Ag
 Go! Express Hamburg, Berlin, Köln/Bonn
 Stuttgart
 Austin Straubel Airport – US
 Jackson Hole Airport – US
 Virginia Commonwealth University – US
 Rice University – US
 Milton Hershey School – IS
 Yale University – US
 UTM University – MALAYSIA
 University of North Carolina – US
 Walter Reed Army Medical Center – Washington, DC
 Tulane University Hospital & Clinic – New Orleans, LA
 Children’s Hospital Boston at Waltham – Waltham, MA
 Children’s Hospital & Research Center – Oakland, CA
 Marine Corps Air Base Yuma – US

NETHERLANDS - EUROPE HQ

Beechavenue 115, 1119RB Schiphol-Rijk
 +31 68 543 6139

CANADA

46 Annual Circle, L6X 2M2 Brampton,
 Ontario
 +1 343 313 0531

UAE, DUBAI

Suite No. 404-410, Diamond Business Center,
 Block A, Arjan, South Barsha
 +971 4 442 9664

UAE, ABU DHABI

Office No. 703, Silverwave Tower
 P.O. Box: 37072 Mina Road
 +971 2 886 4980

INDIA

Office Unit No.411, V Times Square, Sector
 15 CBD Belapur, Navi Mumbai
 +91 22 4968 7447

SAUDI ARABIA

5000 King Fahad St , Floor 5,
 Office 503 Al Jumaiah Center
 Riyadh
 +966 50 683 6964