

NETIX.AI PARTNER'S PROSPECTUS

NETIX.AI
THE SMART MOVE



UNLOCK THE POTENTIAL OF
YOUR PROPERTY



WHO WE ARE



NETIX.AI is an IoT & AI based automation solution provider, leverages its innovative strategies, analytic algorithms and brand agnostic solutions to transform your facilities into safe and sustainable edifices.

NETIX.AI is the pioneer in digital transformation of Assets, Space and Energy management and specialist for Smart Cities, Smart Districts, Smart buildings, & Smart infrastructure.

Headquartered in the Netherlands and with offices worldwide, NETIX.AI is instrumental in providing turnkey solutions for specialized solutions and connected buildings. The company has a diverse and vast portfolio of products and services based on technologies, such as Automation, AI, IoT, life safety and more. We create seamlessly connected technologies that reshape industries, transform cities and enrich lives.

Our connected devices and software enable better, faster, and more reliable management of spaces, reducing energy consumption and costs up to 25% and ensuring that you control up to 80% of the building's energy consumption. We focus on using technology to provide solutions for our customers which has kept us updated with the technological demands and create synergies that shape the digital transformation.

Armed with immense market knowledge of OT/IT sectors and skill in design and built solutions, we would be happy to assist with any opportunities that can transform your environment into a smart and sustainable one.



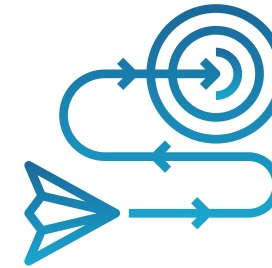
VISION

Our goal is to enable our customers to operate a connected network of devices with centralised monitoring and control, data analytics and intelligence, through the combination of hardware, software and services.



MISSION

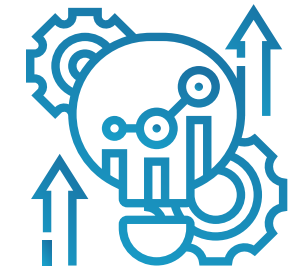
Our mission is to provide the smartest and most efficient solution to building automation and facility management through remote connectivity, seamless integration and future-ready technology.



STRATEGY

NETIX.AI is committed to providing bespoke and world-class energy control solutions for residential, commercial, industrial and infrastructure development applications. With a choice of easy-to-operate technologies.

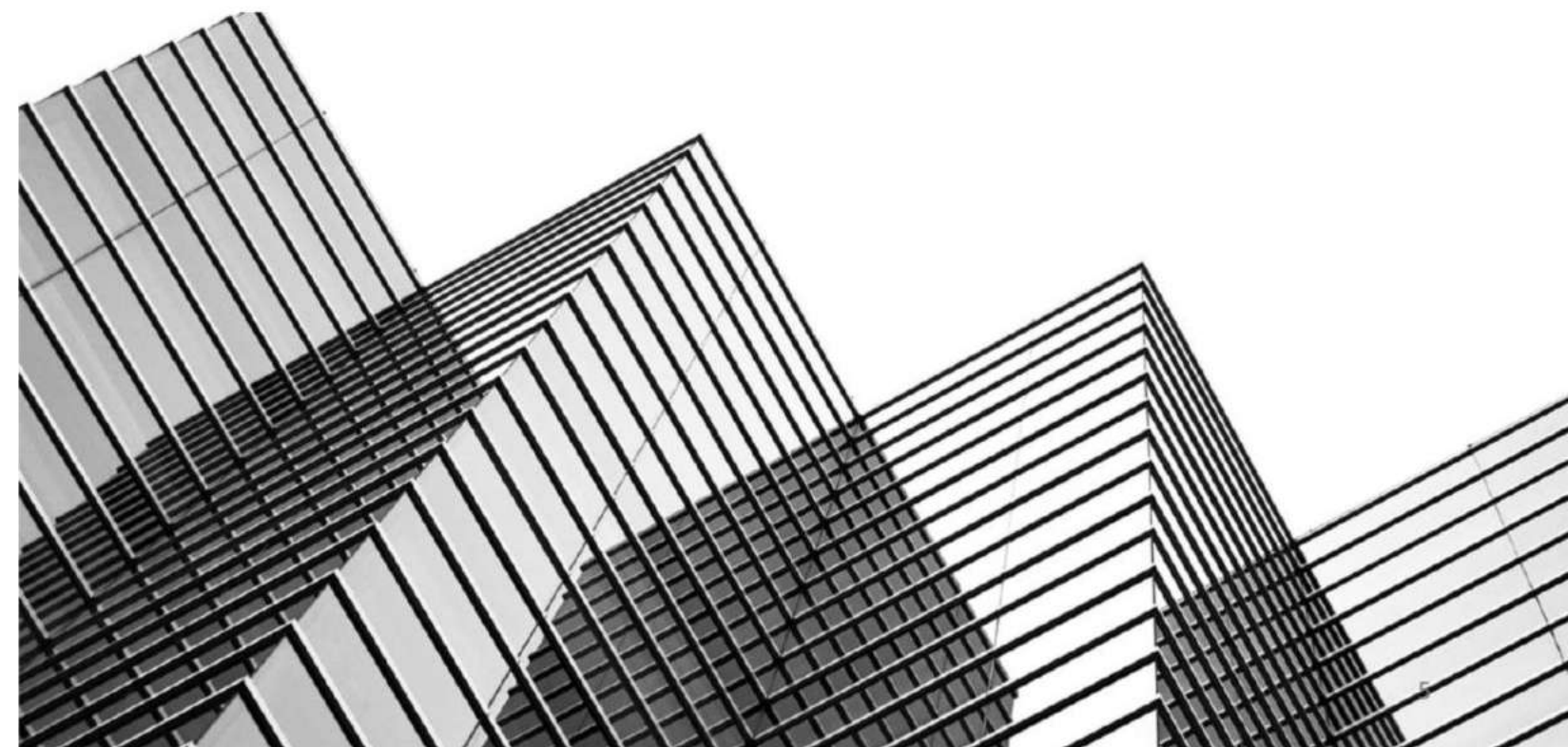
NETIX.AI delivers a suite of integrated products that offer the highest levels of functionality.



DEVELOPMENT

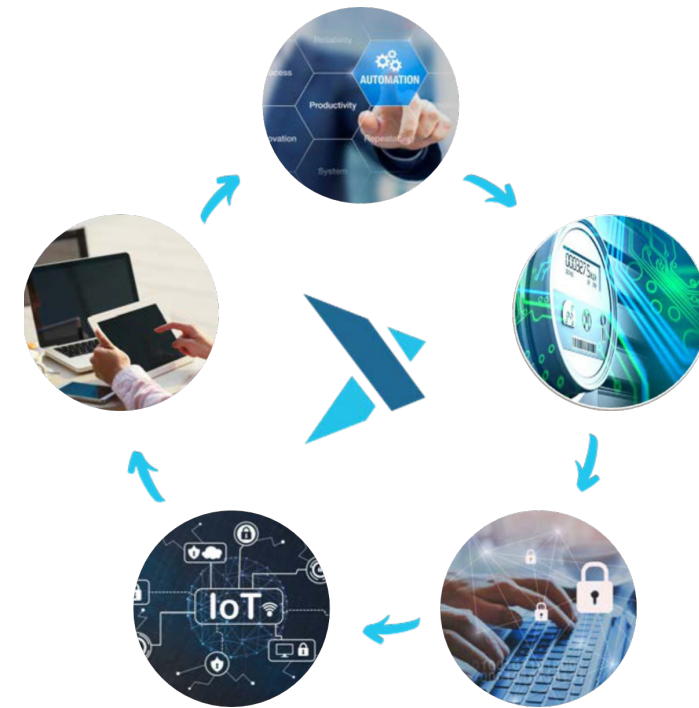
NETIX.AI makes these possibilities a reality by creating network of powerful yet intuitively simple products, which empower people, businesses and cities, both now and into the future.

The goal is to create a world which is connected and powered by the internet of Things: a place where more innovation and data are generated by the people than ever before.



**CREATING
TODAY A
BETTER
TOMORROW**

IOT AND AI SOLUTIONS FOR BUILDINGS & INDUSTRIES



➤ IoT and AI Solutions for Buildings & Factories

➤ NETIX.AI Cube

- Facilities AI
- Energy AI
- Sustainability AI
- CAFM AI

➤ Intelligent Integrated Command Control Center

- Asset Management
- Energy Management
- Property Management & ESG Reporting
- Facility Management

➤ Leading the BMS Transformation – Legacy System Upgrades

➤ Smart Cities - Connected Buildings & Remote Management

➤ iBMS – Intelligent Integrated Building Management System

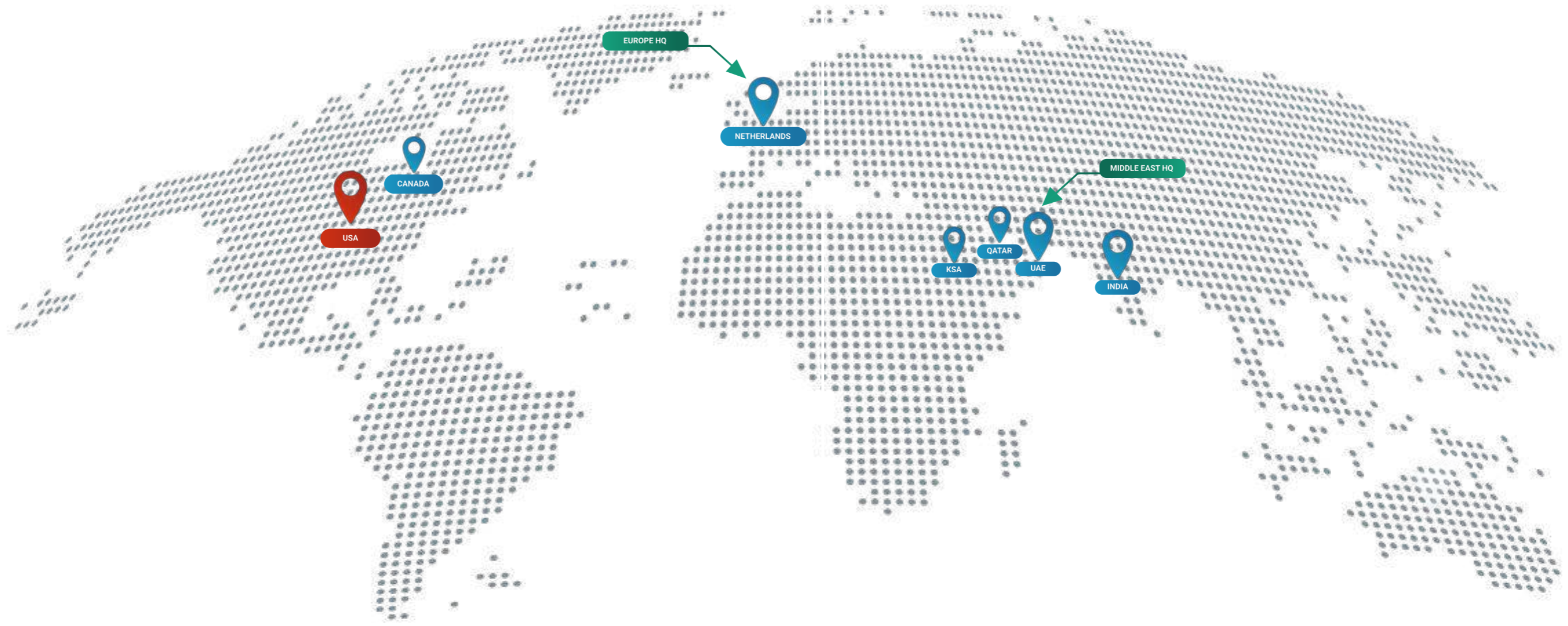
➤ NETIX.AI Sustainability Financed Solutions

- ### ➤ Smart Hardware solutions:
- Smart Thermostats & IAQ Sensors
 - Smart Meters
 - Gateways
 - iBMS Controllers

GLOBAL PRESENCE

DELIVERING SOLUTIONS ACROSS THE GLOBE

At NETIX.AI, we take great pride in the impact we create and the path we leave behind. Our journey began with a vision to revolutionize residential, commercial, industrial and infrastructure development applications while fostering sustainability and social responsibility. As we continue to grow and evolve, we remain committed to reducing our ecological footprint and positively contributing to the communities we serve.





IN TODAY'S WORLD, BUILDINGS ARE EXPECTED TO MEET NEW STANDARDS

In addition to being sustainable, resilient, hyper-efficient, and people-centric, they must also be people-driven. With the use of an intelligent building management system, you can take advantage of advancements in technology and IoT-enabled devices that can reduce operating costs, boost performance, improve occupant comfort, and increase the value of the building as a whole.

YOU CAN MAXIMIZE YOUR BUILDING'S EFFICIENCY WITH ODS GLOBAL'S BMS SOLUTIONS AND TECHNOLOGIES, WHICH WILL HELP YOUR BUILDING MEET THESE DEMANDS AND MAXIMIZE ITS PERFORMANCE.

FACTS

Breaking the monopoly of BMS OEMs in the brownfield NETIX.AI successfully delivering an open and secure integration framework.

By providing a collaborative platform that allows seamless integration with third-party systems. We enable building owners to create innovative custom solutions while preserving their existing infrastructure.

- Cloud and on-premises solutions enhance comfort, safety, and savings for facility managers
- Building management systems converge to the Internet of Things (IoT)- iIBMS, for better visibility and faster problem resolution
- Modernizing your BMS with NETIX.AI does not require a rip & replace of the entire system

"GREAT ACTS ARE MADE UP OF SMALL DEEDS."



NETIX.AI OFFERS BMS UPGRADES AND iIBMS TRANSITION FROM LEGACY SYSTEMS, MEANT TO DRIVE RESILIENCY IN 4 AREAS:

CONNECTIVITY AND INTEGRATION FOR EFFICIENCY AND FLEXIBILITY

Whether a building is at partial or full facility capacity, operational efficiency will always be top of the mind. Digitization of your HVAC infrastructure will bring data from connected smart devices with your BMS applications, helping you keep your building running smoothly, ensuring comfort for occupants, and having the tools for fast diagnoses and resolution of events.

10-15%
REDUCTION ON BUILDING ENERGY PROFILE

CONNECTIVITY ENABLES REMOTE OPERATIONS & ADVISORY SERVICES

Nowadays, there is a critical need for remote building operations. New IoT-enabled BMS solutions enable remote access for facility teams. Using powerful analytic tools, maintenance personnel can evaluate and fix a majority of problems remotely, reducing the number of site visits needed. Bringing BMS data securely to the cloud opens the door to different levels of support.

40-50%
REDUCTION ON BUILDING OPERATIONAL COSTS

CYBERSECURITY HELPS PROTECT YOUR OPERATIONS

Cyber-attacks are becoming more common and are now a greater threat to operational stability than ever before. With the extensive facility and cloud connectivity of the newest BSM solutions, a strong cybersecurity framework is critical to protecting your facility operations and business.

30-40%
ENHANCEMENT OF MANHOUR UTILIZATION THROUGH FAULT DETECTION DIAGNOSTICS

ENTERPRISE SECURITY ELIMINATES CORE RISKS IN YOUR OPERATIONS

Enterprise security is essential to eliminate many of the core risks associated with the new reality that is present in BMS environments. To mitigate that risk, it is essential to gain full visibility into all the operational assets that control the myriad of BMS systems inhabiting the building or campus. That includes HVAC, access control, fire suppression, lighting, physical security, elevators and other devices.

80%
REDUCTION ON CRITICAL BREAKDOWNS USING PREDICTIVE CONDITION ALGORITHMS

PARTNERS BMS ADVANTAGES WITH NETIX.AI



INTEGRATE MULTIPLE OEM

We offer unparalleled maintenance and upgrade expertise, where our expertise in various BMS allows us to identify and resolve issues regardless of brand or manufacturer, ensuring optimal performance. Join our esteemed community of 72 communities, 4 malls/retail centers, and 5 Hospitality properties, including the iconic Dubai Opera House with multiple BMS systems.

OPEN-SOURCE APPROACH

Our BMS solution is open-source, embracing transparency, collaboration, and community-driven development. With all the widely known protocols being accessible, users can freely customize, improve, and integrate the system, fostering innovation and adaptability. Moreover, our own hardware and gateways facilitate seamless conversion and convergence of multiple different systems onto a single, unified platform, simplifying building management and optimizing operational efficiency for our users.

MODULAR AND SCALABLE

Being inherently modular, our solution allows effortless customization and integration of various components. It boasts exceptional scalability, effortlessly adapting to future growth and accommodating up to n systems without compromising efficiency or performance. This ensures a future-proof solution for your building management needs, empowering you with the flexibility to meet evolving requirements.

PARTNERING WITH NETIX.AI BRINGS YOU MULTIPLE COST SAVING BENEFITS

Our extensive knowledge and developed drivers of multiple BMS options allows us to offer an open-source approach, saving you on maintenance expenses and preventing major breakdowns. Furthermore, through our IoT platform, we identify opportunities for energy savings and efficiency improvements, leading to reduced operational costs in the long run. Unlock significant savings for your organization!



NETIX.AI ENSURES YOUR BMS IS PERFORMING AT ITS BEST

Our experts analyze current functionality and suggest upgrades or enhancements to optimize performance without disrupting your existing infrastructure. By staying up-to-date with industry trends, we recommend and implement new features or technologies that improve energy efficiency, occupant comfort, and overall system performance by just onboarding NETIX.AI on your existing infrastructure. Keep your CAPEX low while achieving an effective ROI.

EXPERIENCE UNINTERRUPTED BMS OPERATION WITH NETIX.AI'S CLOUD PLATFORM CONNECTIVITY

Our intelligent analytical platform continuously monitors your BMS, providing regular maintenance updates and inspections. By identifying potential problems before they escalate, we minimize downtime and costly repairs, extending the lifespan of your BMS and enhancing its overall reliability. Leverage the power of connectivity and data on our AI/ML-based platform for future asset and energy management of your properties.

NETIX.AI PROVIDES ADVANCED CLOUD-BASED INTELLIGENT ANALYTICAL PLATFORM FOR YOUR SYSTEMS AND ASSETS

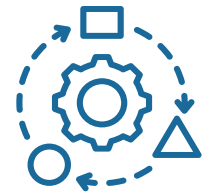
24/7 automated remote monitoring, analytics driven enhanced preventive and predictive maintenance strategies helps to optimize asset performance and improve efficiency. Stay ahead with proactive intervention, leveraging AI-driven insights, tailored to meet your unique facility needs.

ELEVATE EFFICIENCY & COMFORT WITH GREATER DELTA T

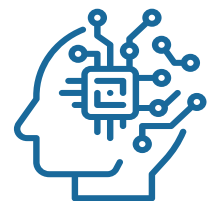
Our advanced analytics driven solution ensures that your system operates at its highest efficiency level by optimizing the temperature difference (**Delta T**) across your chilled water system. Thus, minimizing energy waste and unlock substantial savings on utility bills. We conduct thorough assessments of your building's chilled water system, evaluating its performance, identifying potential inefficiencies, and pinpointing areas for improvement for enhanced comfort & operational & energy efficiency.



MAINTAIN MULTIPLE OEM



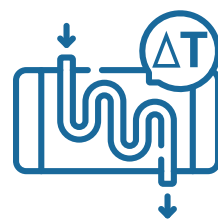
OPEN-SOURCE APPROACH



FUTURE-PROOF SOLUTION

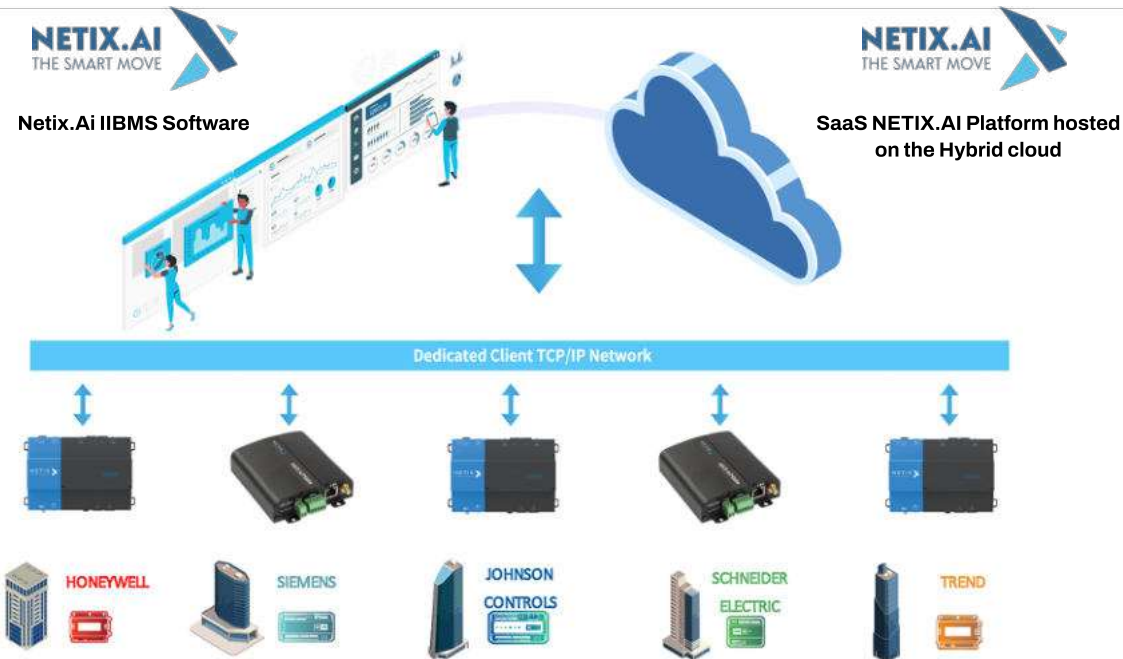


COST SAVINGS



OPTIMIZE DELTA T

RETROFIT BROWNFIELD



WELCOME TO THE FOREFRONT OF INNOVATION IN BUILDING AUTOMATION SOLUTIONS TAILORED FOR THE RETROFIT BROWNFIELD SECTOR.

At **NETIX.AI**, we proudly introduce an innovative approach that seamlessly integrates with various existing third-party systems without disruption. Our advanced technology acts as a smooth layer atop your current infrastructure, **skillfully coordinating improved efficiency and performance**. With our pioneering solution, upgrading your building becomes effortless, eliminating the need for expensive and disruptive system changes. Our dedication to seamless integration guarantees uninterrupted operations, unlocking your brownfield spaces' full potential. Join us on a journey where the past meets the future.

Partnering with **NETIX.AI** embarks you on a transformative journey where the past and the future converge. Experience the synergy of innovative technology harmonizing with legacy systems, unlocking the true potential of your brownfield spaces.

KEY BENEFITS:

- **Seamless Integration:** Our technology seamlessly integrates with a diverse array of third-party manufacturers' systems, preserving your existing infrastructure while enhancing performance.
- **Cost-Effective Modernization:** Avoid costly and disruptive system replacements, saving both time and money.
- **Uninterrupted Operations:** Our commitment to smooth integration ensures that your operations continue without any disruptions during the transition.
- **Enhanced Efficiency:** NETIX.AI's orchestration optimizes your building's efficiency, driving productivity and resource utilization.
- **Legacy meets Innovation:** Partner with us to bridge the gap between your building's historical past and its technologically advanced future.

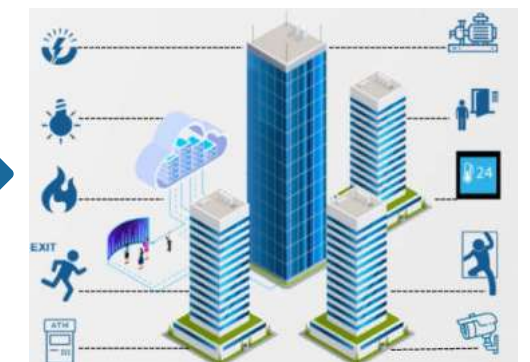
GREENFIELD-NEW BUILDINGS



BUILDING MANAGEMENT SYSTEM
Siload Property - Non Centralized Systems

INTEGRATED BUILDING MANAGEMENT SYSTEM
Buildings - Integrated Systems

IOT BASED SMART CONNECTED BUILDINGS
Residential & Commercial Buildings. Control Room Integrated, Centralized Systems



- Standalone System
- Optimized For Cost
- Holistic View
- Data Driven Intelligence

- Energy Improved System
- Optimized For Operation
- Improved Experience For Occupants & Customers

- AI Machine Learning & IoT Capabilities
- Consolidated-Descriptive-Predictive Intelligence
- Scalable Digitalized System
- Integrated Applications & Infrastructure

Our system is designed for seamless scalability, able to integrate with an unlimited number of future systems. Whether it's 10 or 100 systems, your automation capabilities can effortlessly expand to match your evolving needs.

Join hands with us to forge a new era of automation where every component works in perfect synchrony, paving the way for unparalleled success in the greenfield sector.

Experience seamless automation at , where we transform both brownfield and greenfield sites into hubs of operational excellence. Join us in building a visionary future of automation.

Our open-source modular system integrates smoothly with third-party systems for seamless automation in the greenfield sector. This advanced technology acts as a unifying layer, enhancing efficiency and performance while accommodating new equipment.



A SINGLE WINDOW ACCESS TO SMART DATA

WITNESS THE FUTURE OF BUILDINGS WITH **NETIX.AI** CLOUD SOLUTION – INTELLIGENT INTEGRATED **COMMAND & CONTROL CENTRE**

NETIX.AI's intelligent Integrated Command and Control Centre caters to various facets of commercial/ residential & industrial domains, enabling clients to reap the benefits of optimizing their fixed asset operations and equipment efficiency in real time.

Our Integrated Command and Control Centre enables an enterprise-level view of all connected buildings in the real estate portfolio and automatically enhances the efficiency of assets and the safety of the building/city and its occupants, by utilizing advanced analytics and artificial intelligence.

NETIX.AI's Industrial exchange **NIX** is capable of integrating data from existing operational sites and onboard it on the customizable intelligent platform in order to deliver the best in terms of operational cost and efficiency.

OUR SUITE OF APPLICATIONS

1

BUILDING PERFORMANCE MANAGEMENT

- Aggregating bulk data types to generate meaningful insights and optimize energy use
- District level KPI monitoring and reporting
- Statistical energy savings analysis considering weather and occupational patterns
- Enables data-driven automation and controls strategy

2

REMOTE ENTERPRISE BMS

- Configurable centralised platform for BMS
- Extensive integration capability, seamlessly connects any system irrespective of the type, make or protocol
- Remote access to insights from AI powered analytics

3

FAULT DIAGNOSTICS AND ANALYTICS

- Centralised systems can preempt anomalies to facilitate for smooth facility management operations
- Interactive and real-time data representations
- Multilevel dashboard accessibility

4

FACILITY AND PROPERTY MANAGEMENT

- Streamline CAFM suite
- Integrate Work Order Management
- Executive dashboards
- Automate and configure any process from work orders, alarms, gate pass to much more

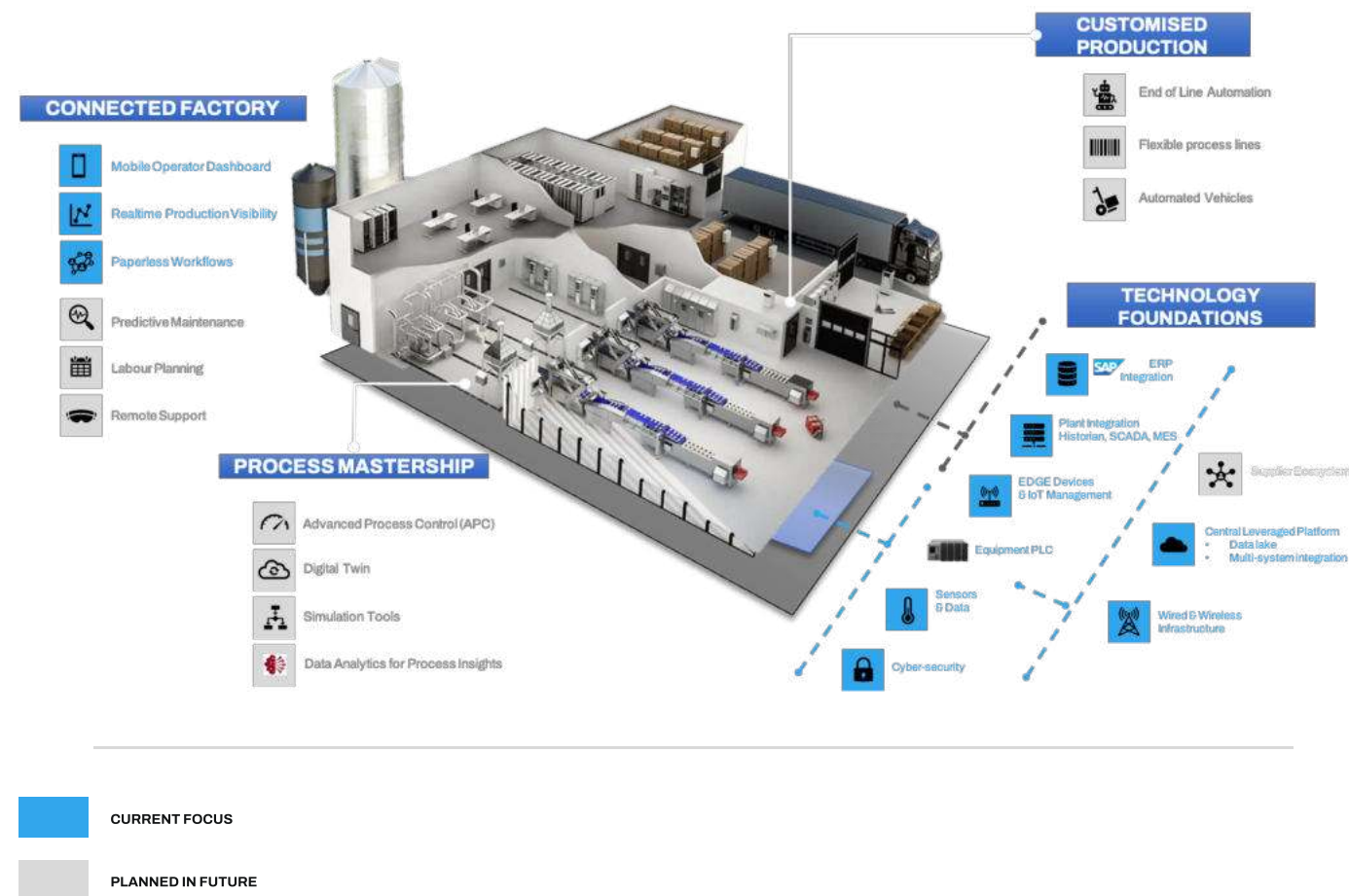
NETIX.AI INDUSTRIAL EXCHANGE NIX

NIX VISION

WHAT IS THE NIX PRODUCT?

A *connectivity platform* to simultaneously collect actual process, machine, and shop floor data from multiple sources, (pre-) process, store, and forward to multiple internal and external third-party applications and services.

-Enables *remote monitoring*, and quick decision-making and provides *data feed* to any *dashboarding* tools and advanced analytics applications.



DIGITAL CONNECTED FACTORY



NETIX.AI is reshaping industries with its game-changing IoT platform. We offer a cloud-agnostic, modular solution that's easy to deploy globally. Say goodbye to hefty costs – our user-friendly interface merges IT and OT seamlessly, driving industrial digitization.

With real-time energy monitoring and remote visibility, you're empowered to make swift, informed decisions from anywhere. Our AI and ML-powered insights lead to constant energy savings and efficient automation, revolutionizing the shopfloor experience.



Realtime Energy Monitoring and Production visibility



Insight driven Decision making



Improved line/machine asset utilization



Resilient and compliant modern architecture to support 24 x7 operations

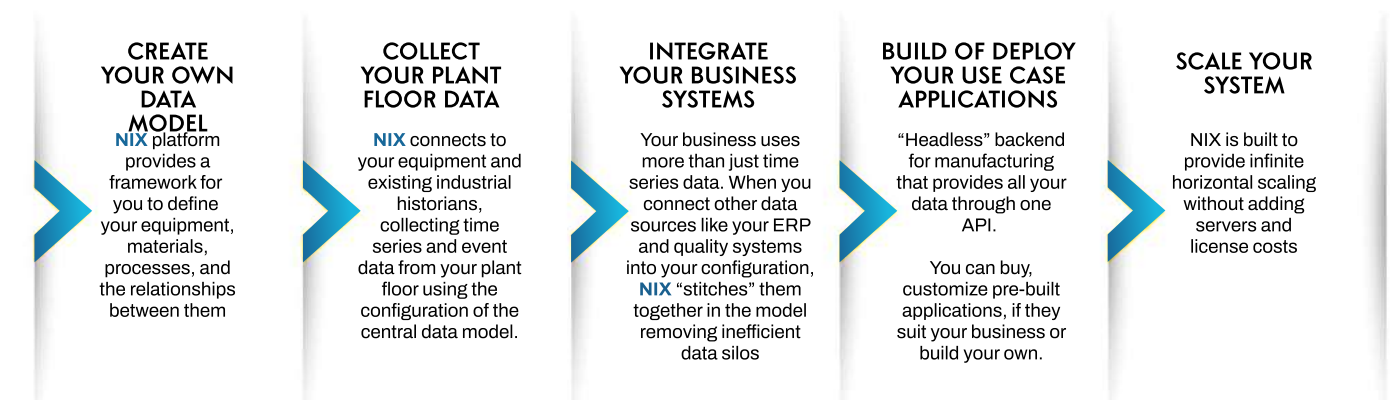


Resilient and compliant modern architecture to support 24 x7 operations



Reduction in Carbon Footprint

NETIX.AI thrives in complex environments, even with outdated devices. We extract vital data without disrupting your setup or requiring major investments. Join us to reshape your industry's future – where sustainability, efficiency, and innovation converge. Let NETIX.AI be your catalyst for transformation.



OTHER SOLUTIONS

SMART ULTRASONIC WATER METERS



Scan to know more



NECO Series



N39



NDU-40



Intelliflow

SMART AIR QUALITY



NXT500



IAQ



SMART IAQ WITH THERMOSTAT

SMART THERMOSTATS



Scan to know more



NXT300



NXT400



NXT500



NXT600

PRECISE DETECTION AND MONITORING ARE ESSENTIAL FOR AN EFFECTIVE HVAC STRATEGY, BEGINNING WITH THE PROCESS OF CONTINUOUS INDOOR AIR QUALITY (IAQ) DATA COLLECTION



ADVANTAGES OF NETIX.AI SMART ULTRASONIC WATER METERS

REGULAR METER



NETIX.AI WATER METER



Consists of moving parts - hence wears and tears over time	No moving parts and hence long term stability and reliability in measurement
No full proof IP rated protection	IP68 rated for full proof protection
No internal data logger	Internal data logger with 36 months storage in case of power failure
Dynamic flow range usually R80-R160	Dynamic flow range up to R800
Higher percentage of non-revenue water & measurement of air	Every drop is counted and no measurement of air
Starting flow approx. 1-2 l/h – 0.04	Starting flow approx. 1-2 l/h – 0.04
No Alarms available	Intelligent alarms in real-time
Manual Data reading	Remote data transferring with full data analysis
Only indication of from the meter is its reading	Indicates Leakage, Burst, Freeze, Overflow, no-flow, reverse flow
No Communication options	Multiple communication options iole: LoRaWAN, W-Mbus, Sigfox, NB-IoT, Mbus, RS485, etc

NETIX.AI SMART THERMOSTATS



INNOVATION AND SUSTAINABILITY

Today's thermostats should not just be control panels for heating and air conditioning. They should be equipped with Wi-Fi, sensors, advanced algorithms and much more.



REGULAR THERMOSTATS



NETIX.AI
SMART THERMOSTAT

No BMS or cloud connectivity provision	1	1 Controllable/programmable through your BMS & cloud.
No Wi-Fi capability and mobile connectivity, have to adjust the appliance's dial or press a button	2	2 Wi-Fi enabled. Can be controlled using app/ platform.
Can't learn and anticipate your temperature preferences. Requires manual adjustments	3	3 Can learn your temperature preferences throughout the day and then automatically adjust as the day progresses
Cannot provide reports. No alerts for the heater and AC units	4	4 Detailed reports on how long the heating or cooling has run each day. Your energy usage as well as how much energy you saved.

NETIX.AI SMART THERMOSTATS



- Our thermostats come with standalone as well as with connectivity options, where all latest connectivity options like Wi-Fi, LoRaWAN, Alexa, Google Home, BACnet MS/TP, IP, Modbus RTU/TCP, etc are available.
- They come with 3.5 inch color Touch Screen and are designed to learn your heating and cooling preferences and then intelligently creates an optimized Schedule to maximize efficiency.
- With a modern digital interface and touch buttons, it's easy to operate and is also WiFi capable, which means you can control it through your mobile devices.
- The Occupancy/ Keycard/ Motion sensor inputs helps to switch the thermostat to ECO/Energy saving mode when the input is inactive.
- These thermostats can also be made available in any RAL color of your choice.

NETIX.AI SMART THERMOSTATS + IAQ

NETIX.AI thermostats have a lethal combination of thermostats coupled with IAQ sensors so that you can control and monitor your HVAC/AHU operations, maintain them and also control the airflow, maximizing energy efficiency with air quality.



- ✓ By implementing air quality solutions, facilities can reduce the levels of pollutants in the air
- ✓ By improving air quality, facilities can help businesses to operate more efficiently and avoid the costs associated with employee absenteeism.
- ✓ Facilities can protect natural resources and ecosystems by implementing air quality solutions.
- ✓ Easily detect PM10, PM2.5, PM1.5, VOC, CO2, Humidity, Pressure, PIR, light, NO2, Formaldehyde and Ozone

DRIVING ESG & SUSTAINABILITY WITH NETIX.AI



Reduced Energy Costs



Reduced FM costs



Optimised Manpower



Detailed Records



Monitored Equipment Performance

OPTIMIZED MANPOWER RELATED OPEX



40-50%

Reduction on Building Operational Costs

80%

Reduction on critical breakdowns using predictive condition algorithms

30-40%

Enhancement of manhour utilization through fault detection diagnostics

10-15%

Reduction on Building Energy Profiles



10 EMAAR SHOPPING MALLS

EMAAR Properties is a renowned real estate development company founded in 1997; EMAAR has become synonymous with luxurious and innovative projects that have transformed skylines and communities. The company has played a significant role in shaping Dubai's landscape and has expanded its presence globally.

The company's portfolio encompasses residential properties, commercial developments, hotels, malls, and leisure destinations. EMAAR's projects are characterized by architectural excellence, state-of-the-art technology, and world-class amenities.

The company has successfully adapted to diverse markets, delivering projects that cater to local preferences and contribute to the development of sustainable communities.

Their interest with us is to manage & maintain BMS in all of their **10 shopping Malls & Five-Star Hotels.**



WE ARE MAINTAINING:

- | | | | |
|-------------------------|-------------|------------------------------|----------------------|
| • Marina Mall & PIER 7 | JCI Metasys | • The Mira Town Center | JCI FX |
| • Gold and Diamond Park | Schneider | • The Arabian Ranches 2 Souk | Honeywell Centraline |
| • South Village | Schneiderx | • The Leisure Center | Honeywell Centraline |
| • The Spring Souk | Schneider | • The Meadows Souk | Siemens |
| • The Meadows Village | Sauter | • Time Out Market | Honeywell |



9 EMAAR FIVE-STAR HOTELS

EMAAR is involved in real estate development and has diversified its business interests. It operates Emaar Hospitality Group, managing a portfolio of hotels and resorts, and owns entertainment and leisure destinations like Dubai Opera and Reel Cinemas.

Emaar Hotels prides itself on delivering unparalleled guest experiences and upholding the highest standards of hospitality. Emaar Hotels continuously explores innovative concepts and incorporates the latest technology to enhance the guest experience.



WE ARE MAINTAINING:

- | | | | |
|-----------------------------------|-----------|-----------------------------|---------|
| • Palace Hotel | Honeywell | • Address Sky Views | Siemens |
| • Dubai Hills Golf Club | Honeywell | • Address Boulevard | Siemens |
| • Address Fountain Views 1 | Siemens | • Address Downtown | Siemens |
| • Address Fountain Views 2 | Siemens | • Vida Creek Harbour | Siemens |
| • Address Fountain Views 3 | Siemens | | |



72 EMAAR COMMUNITIES

COMMUNITY DOWNTOWN

At Emaar Community Management (ECM), delivers world-class services in all aspects of community and association management. ECM manages large-scale communities with tailor-made service delivery for customers.

Their interest with us is to manage & maintain BMS in all their 72 communities.

WE ARE MAINTAINING:

- **29 Boulevard** Johnson Control
- **8 Boulevard Walk** Honeywell
- **Boulevard Car Park** Siemens
- **Boulevard Central** Johnson Control
- **Boulevard Crescent** Honeywell Centra Line
- **Boulevard Heights** Sauter Controls
- **Boulevard Plaza Tower** Schneider Electric & Trend
- **Boulevard Point** Honeywell
- **Burj Views** Schneider Electric
- **Burj Vista** Siemens
- **Claren** Schneider Electric

WE ARE MAINTAINING:

- **Downtown Views 1** Johnson Control
- **Emaar Square Phase 1** Honeywell
- **Emaar Square Phase 2** Honeywell
- **Emaar Towers** Trend
- **Old Town Commercial Island (OTI)** Honeywell
- **Old Town Residences** Siemens & Schnieder
- **Opera Grand** Sauter Controls
- **South Ridge** Honeywell
- **Standpoint** Siemens
- **The Lofts** Siemens
- **The Residences 1 & 2** Trend
- **New Emaar Sales Center** Honeywell



COMMUNITY EMAAR DUBAI MARINA

WE ARE MAINTAINING:

- 52/42 Towers at Dubai Marina Honeywell
- Dubai Marina Al Majara Schneider Electric
- Dubai Marina Al Sahab Schneider Electric
- Dubai Marina Park Island Honeywell
- Dubai Marina Park Promenade Honeywell
- Dubai Marina Plaza Alerton
- Dubai Marina Quays Siemens
- Dubai Marina Towers Siemens
- Sunrise Bay Honeywell

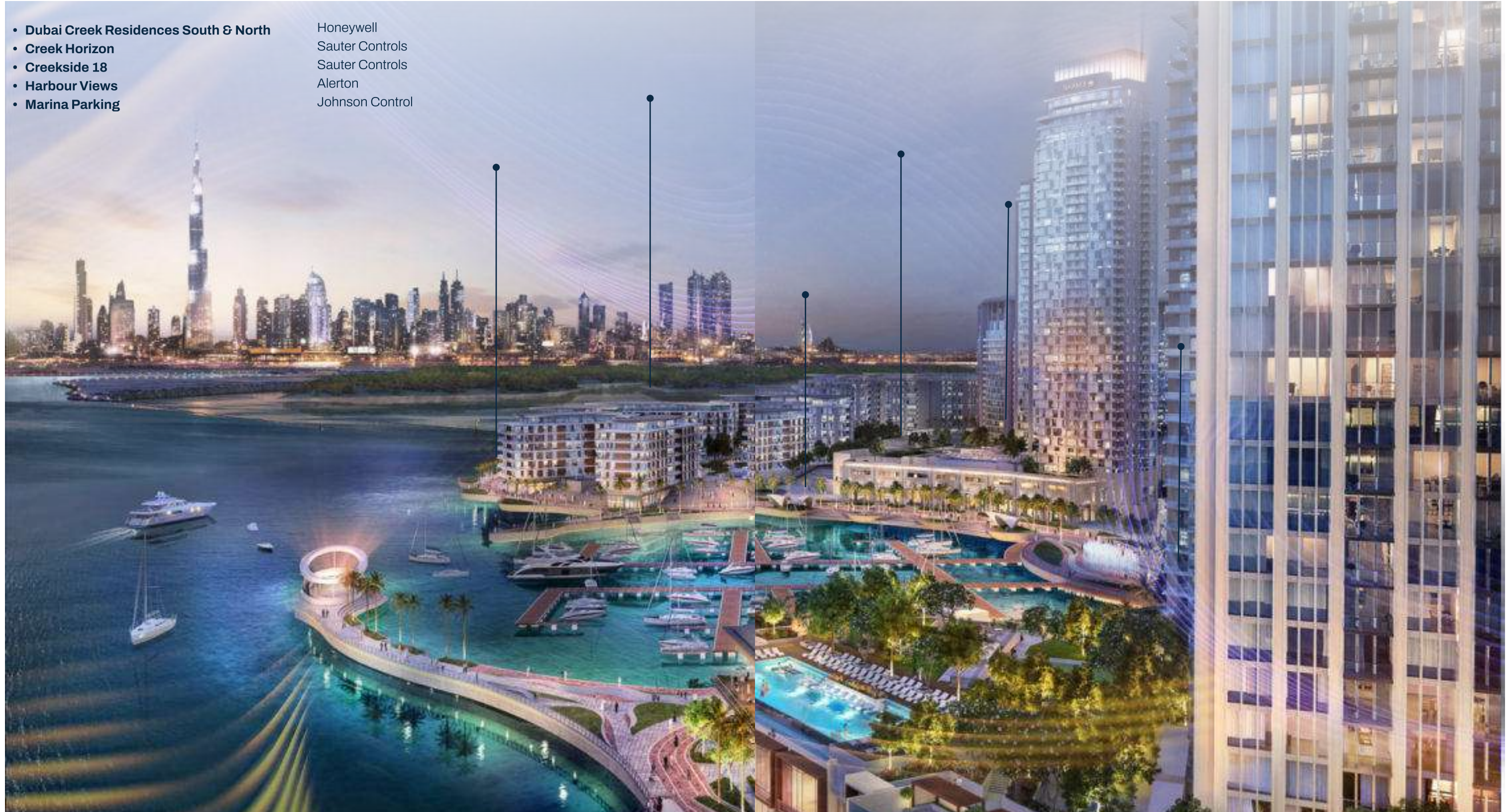


COMMUNITY EMAAR DUBAI CREEK HARBOUR

WE ARE MAINTAINING:

- Dubai Creek Residences South & North
- Creek Horizon
- Creekside 18
- Harbour Views
- Marina Parking

- Honeywell
- Sauter Controls
- Sauter Controls
- Alerton
- Johnson Control



COMMUNITY EMAAR DUBAI GREENS & VIEWS

WE ARE MAINTAINING:

- **G&V-Golf Towers** Siemens
- **G&V-The Links** Johnson Control
- **G&V-The Fairways** Siemens
- **G&V-Mosela** Siemens
- **G&V-Tanaro** Siemens
- **G&V-Panorama** Schneider Electric
- **G&V-Greens Views 1&2** Siemens
- **G&V-Greens Al Sidder 1,2,3,4** Siemens
- **G&V-Greens Al Ghaf 1,2,3,4** Siemens
- **G&V-Greens Al Jaz 1,2,3,4** Siemens

- **G&V-Greens Al Nakheel 1,2,3,4** Siemens
- **G&V-Al Dhafrah** Honeywell
- **G&V-Al Thayyal** Honeywell
- **G&V-Al Samar** Honeywell
- **G&V-Al Ghozlan** Honeywell
- **G&V-Al Arta** Honeywell
- **G&V-Al Alka** Honeywell
- **G&V-Una** Siemens
- **G&V-Turia** Siemens
- **G&V-Arno** Honeywell
- **G&V-Travo** Siemens



COMMUNITY EMAAR DUBAI HILLS ESTATE

WE ARE MAINTAINING:

- **Mulberry Phase 1 & 2** Johnson Control
- **Acacia** Sauter Controls
- **Park Heights 1& 2** Azbil
- **Park Square C1 & C2** Azbil
- **DHE Business park** Honeywell
- **Park Point** Johnson Control
- **Park Ridge** Schneider Electric
- **Collective 1** Schneider Electric
- **Collective 2** Schneider Electric
- **The Hills** Schneider Electric
- **Golf Views** Sauter Controls



19 DAMAC RESIDENTIAL TOWERS

The premier luxury property developer in Dubai! DAMAC Properties is part of DAMAC Group that has been shaping the Middle East's luxury real estate market since 1982, delivering iconic residential, commercial and leisure properties for sale across the region and beyond.

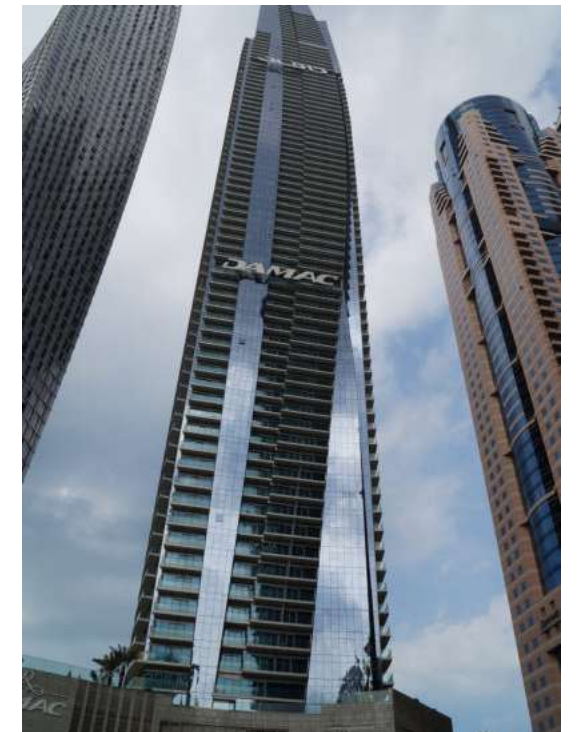
WE ARE MAINTAINING:

- **Damac Heights** Honeywell Centraline
- **Ocean Heights** Honeywell
- **The Waves** Niagara Frontend / Schneider TAC
- **Lake View** Schneider
- **Suburbia** Honeywell Centraline / Niagara NETIX.AI



WE ARE MAINTAINING:

- **Ghalia Tower** Schneider
- **Green Park A** Siemens
- **Tower 108** Schneider
- **Tenora** Honeywell EBI R430.1
- **Capital Bay/Deville Breeze** Honeywell Centraline
- **Damac Paramount A, B, D** Honeywell Centraline
- **Executive Bay** Honeywell Centraline
- **Upper Crest** Honeywell Alerton
- **XL Tower** Honeywell Centraline
- **Artesia (B,C,D)** Schneider
- **Carson (A,B,C)** Honeywell Centraline / Niagara NX
- **Golf Vita** Honeywell Centraline / Niagara NX
- **Merano** Honeywell Centraline / Niagara NX
- **Majestine** Honeywell Centraline / Niagara NX Sauter



SUCCESS OUTCOMES

COMMERCIAL SECTOR



City Walk, Public Area, Dubai
Honeywell, Centraline



JAFZA Conventional Centre, Dubai
Honeywell, Centraline



Emarat HQ
Johnson Control



77 Buildings for Etisalat
JCI Easy IO , JCI Metasys , Siemens ,
Honeywell, Alerton, Centraline



Lulu Umm Al Quwain
Honeywell, Centraline

PLC & SCADA REFERENCES



WE ARE MAINTAINING:

- Dubai Opera SIMATIC
- EMAAR ETS Allen-Bradley
- MTC Pumping Station ABB
- Lusail City Schneider, GE electric, Mitsubishi



Lusail City
Schneider, GE electric, Mitsubishi



Dubai Opera
SIMATIC

KEY BMS REFERENCES



Residential

- The Royal Oceanic
- Fairmont Residences- South Residence
- Fairmont Residences- North Residence
- Balquis Residence
- Macemacro-Windsor Manor Tower
- Tamweel Tower
- Goldcrest Views, - EBI
- Hilliana
- Al Shera
- Lake Side Tower-JLT
- Reef Residence (2B+G+P3+36+R), JVC
- One Lake Plaza, JLT - Dubai
- Limestone House Residential-Retail Body Corporate
- Casa Flores
- Gemini Spelndor - Residential
- City Walk Phase 2 & 3 (14 Buildings)
- HCT RAK
- Sofitel Staff Accommodation
- Jeever Tower-Dubai
- Dubai Wharf
- Prospect Heights-Buildings - Dubai
- Emirates Crew Accommodation 1-5
- DSO-Dubai (Block-1 & 2)
- Noor Al Safa , Jaddaf - Dubai
- Soul Avenue
- MBL Residence (K2), Cluster K, JLT
- RT11 Cleopatra Tower (B+G+12+RF)
- Shoreline Building 7 & 8, Palm Jumeirah
- Al Haseer: 2B+G+10+2RF, 131 units
- Al Nabat: 2B+G+9+2RF, 120 units
- Sobha Hartland Greens Phase 3 (Bldg 5,6)
- Q Residence, Al Raha Beach
- Al Rimmel Tower A & B, Al Jaddaf
- University Of Sharjah (9 Campus Buildings)
- Vision Tower
- Sobha Creek Vistas, Sobha Hartland
- Sparkle Tower (B3+G+29+14+4), Dubai Marina
- The 8, Palm Jumeirah
- Hamani Residences, JVC
- Sarh Al Emarat Tower, Al Majaz 2 - Sharjah
- Verve (Bassam Tower)
- Al Seef Meraas Project
- Data Center 1,2,3 & 4, DIFC -
- Deira Waterfront Development
- ICP Mall @ International city
- Al Khail Plaza, Al Khail Road
- Victoria International School, Al Taawun
- RTA Multistory Car Parking Umm- Ramool

- RTA Garhoud Marine
- 23 Marina Tower at Dubai Marina

Retail Outlet / Mall

- International City Pavillion (ICP)
- Zero 6 (Six) Mall, Jurina
- Mall of Umm Al Quwain -
- Blue Waters, The Beach Retail

Transportation/ Gov Entity/ Logistics/Warehouse

- Al Quoz Bus Depot and Accommodation RTA Multistory RTA
- Sharjah Transport HQ Building (SRTA)
- Landmark Omega Distribution Centre Warehouse, Dubai Sout

Hospitality

- Villa Rotana Hotel Apartments
- The St. Regis Downtown Hotel, Marasi Drive
- Novotel Bur Dubai
- NOVOTEL Sharjah Expo Centre
- Marriott Executive Apartments Dubai Creek,
- Rigga Al Buteen St. Creek
- Al Khoory Atrium Hotel, Al Barsha First
- Royal Continental Hotel Dubai
- Millennium Mont Rose Hotel Apartments
- Millennium Hotel, Al Barsha
- Millennium Atria Hotel, Business Bay
- JA Ocean View

Education/ University

- HCT, Abudhabi,
- HCT Fujairah
- Diyafah International School – Abu Dhabi
- AL DHAFRA Provis Schools - Dalma School
- AL DHAFRA Provis Schools Zayed City School
- AL DHAFRA Provis Schools Ghayathi New School

KEY BMS REFERENCES

Residential/ Mix Use Buildings

- Damac Various 30 Buildings
- Montrose Residences-A
- Belgravia 2
- Clayton Residency, Business bay
- Hamilton Residency, Business bay
- Mayfair Tower, Business bay
- Mayfair Residency, Business bay
- The Atria Principal, Business Bay
- The Atria Residences, Business Bay
- The Burlington Tower, Business Bay
- Zahra Residential Apartments (Plot 15), Townsquare
- Safi Residential Apartments (Plot 16), Townsquare
- Hayat Boulevard Buildings (Plot 7, G+P+8), Townsquare
- Rawda Residential Apartments (Plot 32-33), Townsquare
- Emaar Accommodation (Al Qudra), Plot-35, Townsquare
- Zahra Breeze Residential Apartments (Plot 8), Townsquare
- Jenna and Warda Apartments (Plot- 9-10), Town Square
- UNA Apartments (Plot 27A), Townsquare
- Topaz

Commercial Buildings

- Mazaya Business Avenue AA1
- Mazaya Business Avenue BB1
- Mazaya Business Avenue BB2
- Al Manara Tower, Business Bay
- HDS Tower (3B+G+39+R), Cluster F, JLT - Dubai
- Opal Tower, Business Bay - Dubai
- B2B Tower
- Tamani Arts
- JAFZA Convention Centre (Tower-1, 2)
- Convention Centre)
- Al Zahrawi Building 33& 34, Dubai Healthcare City
- Gateway Building Media City (Bank of Sharjah)
- Emirates General Petroleum Corp. (Emarat), Head Office
- Al Mezan Tower
- 11 Esteem Banks



CASE STUDY



INTEGRATION OF 14 BUILDINGS (PHASE 2 & 3) CITY WALK - THE UNITED ARAB EMIRATES



THE CHALLENGE

The Meraas real estate portfolio comprises property development sales and asset management across Dubai. City Walk by Meraas is an open, design-inspired neighborhood in the heart of Dubai with 14 buildings in the cluster of Phase-2 and Phase-3. Meraas brings together the best industry digital experts, assets and platforms with a unique service and operating model by integrating all the 14 buildings in a central server to monitor and control the HVAC and Lightings.

THE PROJECT

The integration of 14 buildings to the Central Server using Netix Uniview to monitor, control and schedule the devices in a planned and efficient manner. The project is inclusive of more than 14000 IO Points.

THE PRODUCT

NETIX Uniview SUPRA Software

THE SCOPE

- Integration of different manufacturer chiller units across 14 buildings of Phase-2 and Phase-3 and ---connecting to the Central Server.
- Supply, Installation and T&C of Server and Uniview SUPRA Software.
- Discover and Map the BMS equipment points from Controllers & Gateways installed across 14 ---different buildings via BACnet.
- Generating different levels of alarm and mailing the unacknowledged and pending alarms to the ---MEERAS CAFM Server, client and FM team
- Completed system validation:
 - Design qualification (DQ)
 - Installation qualification (IQ)
 - Operational qualification (OQ)

SYSTEM CONTROLLED / MONITORED

- Chilled Water System – 16 sets
- FAHU – 18 nos
- FCU – 846 nos
- Fans – 230 nos
- Pump – 76 nos
- Fire Pump – 5 sets
- PMU – 36 nos
- Lighting Control – 1322
- Circuits Generator & UPS – 5 nos
- Fire Alarm – 155 zones

CASE STUDY



UPGRADATION/INTEGRATION OF 3 BUILDINGS MAZAYA BUSINESS AVENUE - THE UNITED ARAB EMIRATES



THE CHALLENGE

Since End user Saga International and Facility Management M/s Concordia was managing multiple assets all over 3 buildings they look for a system which can integrate, control and schedule all the HVAC equipments and Lighting and Monitor Electrical, Plumbing and equipments to a single software platform which gives more analytical information which supports them to operate and maintain effectively and efficiently. Saga International looking for a solution which can upgrade the BMS with the latest platform and push the data to their analytical platform in unified protocol format in a real time. Saga International

THE PROJECT

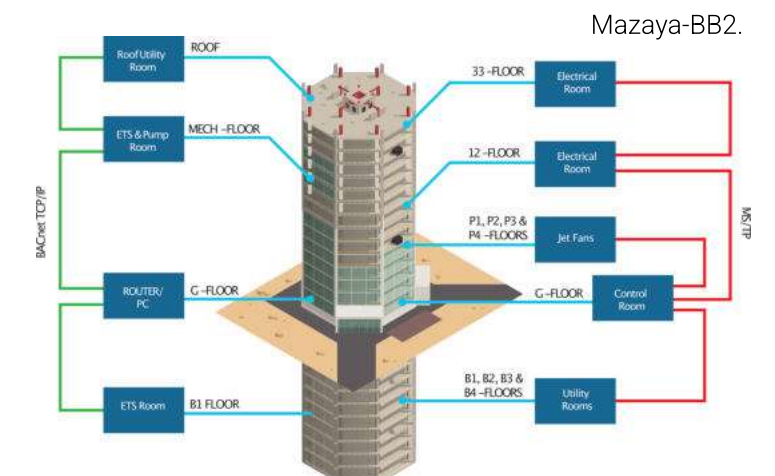
Integration/ Upgradation of different units across 3 buildings (Mazaya Business Avenue – AA1, BB1 & BB2). The project was carried out in the Middle East Region, The United Arab Emirates and is inclusive of more than seven thousand IO points.

THE SCOPE

- Integration of different units across building (Mazaya Business Avenue – AA1, BB1 & BB2) and connecting to PC.
- Supply, Installation and T&C of PC & Uniview SUPRA Software.
- Discover and Map the BMS equipment points from Controllers & Gateways installed across buildings via LoN Works Network protocol.
- Completed system validation:
 - Design qualification (DQ)
 - Installation qualification (IQ)
 - Operational qualification (OQ)

SYSTEM CONTROLLED / MONITORED

- Fans
- Pump
- Lighting Control
- Heat Exchanger & CHW Pump
- Fire Pump & Damper
- FAHU & FCU



CASE STUDY



THE CHALLENGE

The Swiss International School in Dubai (SISD) features an eco-friendly campus, high energy efficiency standards, and state-of-the-art sports facilities. In the region, it has one of the best boarding houses. This 70,000-square-meter campus has a capacity of 2,000 students and is designed and engineered for the highest expectations. In the UAE & GCC, 70% of the peak electricity load is due to cooling buildings, which has grown by 5 percent annually over the past six years. As part of its eco-friendly infrastructure design, the end-user sought a solution to integrate multiple vendor/ protocol equipment, offering an advanced graphical user interface and high processing power. Reduced latency and optimized.

THE PROJECT

Single centralized supervisory console to control and monitor each parameter of the primary and sports block operations in real-time using Netix.AI advanced graphical UI with high processing capabilities including integration of two different make BMS system with more than 5000 data points.

THE SCOPE

- Centralization, normalization, and integration of the data streams from equipment and system-level building services across diverse legacy OEM systems – Trend and Centraline
- Parameters to be mapped from 50 controllers and gateways and data to be exposed in a unified BACnet protocol format
- Integration be carried out without disturbing the existing data interface points to ensure smooth operations.
- To assist in energy savings at no negative effect to comfort level.
- Enable the end-user to optimize their operations with early detection of equipment failures and thus minimize the energy profile of the two buildings.

SYSTEM CONTROLLED / MONITORED

- Heat Exchanger
- Chilled water pump
- FAHU
- AHU
- FCU
- Fire alarm system
- Central battery emergency lighting system
- Fire pumps
- Fans
- Fire dampers
- Power monitoring unit

CASE STUDY



THE CHALLENGE

Emarat is an oil and gas provider of choice for the public and private sectors in the United Arab Emirates. These include large corporations, aviation industries, national security bodies, and key infrastructure entities. Emarat Head Office is a multi-story building. It is an iconic/historic structure overlooking Dubai's business district. Over 50 percent of the peak electricity load in the UAE & GCC can be attributed to building HVAC systems over the past few years. Poor and ineffective BMS maintenance results in higher energy costs, lower system performance, and longer equipment life. To overcome these challenges and keep in line with the organization's initiative to operate as per all national and international standards, help reduce the impact on the environment & improve energy efficiency, the end-user was looking for a vendor-neutral solution that could integrate into multiple systems and equipment and reflect the COV (change of value) occurrence and control parameters in real-time while minimizing overall latency of the system and enhancing the buildings energy profile.

THE SCOPE

- The supply and T&C of the intelligent integrated building management system
- Configuration of Various levels of alarms, notifications, event logs, time scheduling and trend analysis.
- Customized user interface, which features a graphical navigation system that allows the facility management team to access reports and logs.
- Get data from existing multiple vendor equipment and integrating diverse systems onto a unified secure Niagara platform

THE PROJECT

A unified approach was taken delivering an iIBMS solution tailored to the end user's requirement. NETIX.AI provided an advanced front-end integration powered by the Niagara Framework which delivers ultra-low latency and high computational capabilities.

SYSTEM CONTROLLED / MONITORED

- Chilled water pump
- Fire alarm system
- Chiller
- FAHU
- AHU
- FCU
- VAV
- Central battery emergency lighting system
- Power monitoring unit
- Fire dampers
- Fire pumps
- Fans

CLIENTS TESTIMONIALS



“

LETTER OF APPRECIATION FOLLOWING BMS INTEGRATION

"The challenge in the contract was to integrate data from 14 buildings without disturbing the front end work stations, as well as correct mapping and providing email alarm alerts in real time. The work was completed on time and to our complete satisfaction. The integrated solution has been in use for over 2 years and working very satisfactorily. Engie Solutions are very happy with the solutions provided using Niagara's open framework solutions and the dedicated team of ODS Global".

Joseph Yousef
Area Manager - Operations — CITY WALK

“

LETTER OF APPRECIATION FOLLOWING BMS UPGRADE

To upgrade and unlock an operational BMS and enhance its functionality is a true challenge. Its highly commendable what Netix and Tridium have accomplished, and we confirm that they have exceeded our expectations. The new BMS system provides us excellent tools to monitor MEP systems, react in time to identified issues, optimize energy saving features and deal more efficiently.

MANOJ KAKAD
Manager – Technical, SAGA International

“

LETTER OF APPRECIATION FOLLOWING BMS TRANSFORMED

The NETIX.AI intelligent GUI is the android solution which has transformed our locked BMS into an open, scalable and brand agnostic system. With minimal manpower we can oversee the entirety of our systems through an advanced user- friendly graphical interface. It's truly amazing and commendable that Netix and Tridium's Niagara Framework has made it possible to optimize operations, enhance energy savings and increase the well-being of occupants – students and teachers to name a few, all through an opensource intelligent platform.”

Ashfaq Khan
Head of FM & HSO. SWISS International School

NETHERLANDS - EUROPE HQ

Beechavenue 115, 1119RBSchiphol-Rijk
+31 68 543 6139

CANADA

46 Annual Circle, L6X 2M2 Brampton,
Ontario
+1 343 313 0531

UAE, DUBAI

Suite No. 404-410, Diamond Business Center,
Block A, Arjan, South Barsha
+971 4 442 9664

UAE, ABU DHABI

Office No. 703, Silverwave Tower
P.O. Box: 37072 Mina Road
+971 2 886 4980

INDIA

Office Unit No.411, V Times Square, Sector
15CBD Belapur, Navi Mumbai
+91 22 4968 7447

SAUDI ARABIA

5000 King Fahad St , Floor 5,
Office 503Al Jumaiah Center
Riyadh
+966 50 683 6964